

FINISH

» THE YEARBOOK FROM LUCAS - THE AWARD WINNING FIT OUT & FINISHING SPECIALISTS «

2014

THE LUCAS LEGACY

We look back at almost half a century in the business

NEED FOR SPEED

McLaren puts us in pole position

HEIGHT OF LUXURY

Take the tour of the world famous Savoy Hotel

BELLA ITALIA

Join us on a trip to Tuscany to meet a key supplier

ENJOY THE RIDE

The Emirates Air Line brings you into our world

 LUCAS

GET THE LOOK THAT
DEFINES YOUR BRAND

Corporate Wear Ltd



We take time to understand your business, delivering a bespoke service specific to your needs.

With an extensive range of high quality workwear products we help your staff feel proud, professional and motivated whatever your industry.

corporatewearltd.co.uk
01844 220 500



Proud suppliers to





“This is a yearbook of sorts that will give you an insight into Lucas”

THE PERFECT FINISH

Hello and welcome to *Finish*, a brand new publication from Lucas, the award winning Fit Out and Finishing Specialists. Within these pages you'll discover all you need to know about our company and what we can offer the industry. Moreover, this is our chance to give something back to our clients by putting together a yearbook of sorts and rounding up some of our major projects and achievements from the past, as well as setting out our vision for the future.

Get better acquainted with Lucas through our insightful timeline and staff interviews, where we introduce you to some of the key members of the team. We've also gathered up a few of the top headlines from over the past year in our news section, as well as some fun facts about the business for you to enjoy. We take you on a grand tour of our head office in Wrotham, Kent and you'll also hear my story of how I got started with the company.

Further on are testimonials from a selection of our clients, all of whom have received the Lucas treatment and provided us with their encouraging and positive feedback. Additionally, discover some of our most inspiring and exciting projects to date, including The Shard, Café Royal and the London 2012 Olympic Stadium, to which we were fortunate enough to add our specialist fit out and finishing touches. You'll also be introduced to some of our existing clients with whom we have established long-lasting relationships, such as global consultancy and construction firm, Mace, and Formula 1 champions, McLaren.

This is a luxury lifestyle publication, so we'll be taking you on a journey to Italy where we catch up with one of our main stone and tile suppliers, The Thomas Group. Plus, one of our most prestigious works to date, The Savoy Hotel in London, gets given the five-star treatment with an insightful recounting from our Senior Project Manager, Richard Wilson.

We give you a sneak peek at what's in store with our upcoming Pro Tools range, as well as looking back on our favourite moments through a selection of snapshots from the Olympic Games, Construction News Specialist Awards and the 2013 Spanish Grand Prix. You can also find out about one of our latest ventures as we develop our BIM strategy.

As Executive Chairman and Managing Director of Lucas, you'll hear my thoughts on the latest lifestyle gadgets on the market, as well as getting to know our roots through an interview with the company's founder, Sam Lucas.

All of this and more can be found in the first issue of *Finish*. We hope you enjoy reading it and learning about the history of our company, where we are now and how we're looking to the future as an innovative and forward thinking business in today's construction, fit out and finishing industry.

Thanks for reading,

Danny Lucas
EXECUTIVE CHAIRMAN AND MANAGING DIRECTOR

P.S. Look out for my closing thoughts on p.97

CONTENTS

06 LUCAS NEWS
All the latest headlines and developments from our part of the world

08 LEADING FROM THE FRONT
MD and Executive Chairman, Danny Lucas, tells his story

12 MEET THE TEAM
Say hello to some of the key players from the Lucas group

14 WHERE THE MAGIC HAPPENS
Take the tour of Lucas HQ in Wrotham, Kent- you'll be impressed!

19 FAMILY VALUES
Our company's founding father, Sam Lucas, reveals how it all began

20 PRIDE OF PLACE
A roundup of some of our most acclaimed and impressive projects to date

34 'PROFESSOR GREENSLADE'
Our Technical Services Manager demonstrates how he's pushing the boundaries

36 FIVE STAR SERVICE
Get swept up by one of our most luxurious projects, The Savoy Hotel

42 HARDER, BETTER, FASTER, STRONGER
Danny Lucas shares his thoughts on some top lifestyle gadgets

44 CROSSING BOUNDARIES
From commercial to residential, our work can be seen in a range of different sectors

52 THE MATERIAL WORLD
We hear about the history and latest developments of four key suppliers

60 THE COMPANY WE KEEP
Get to know some of our clients and business partners



66 SAFETY AND GREEN CREDENTIALS
Find out how we do our part for the environment and the safety of our workplace

71 COMMERCIAL CORNER
Meet the commercial quintet that really delivers and makes sure our projects run smoothly

73 TOOLS OF THE TRADE
Your exclusive sneak peek at our upcoming Pro Tools range

76 SET IN STONE
Take a trip to Tuscany to find out where we source some of our finest materials

80 LUCAS BY NUMBERS
Some of the facts and figures to know about our company

82 SOCIAL SNAPSHOTS
Highlights from a selection of special events over the past year

90 INTELLIGENT 3D MODELLING
We team up with jhd Architects for the development of Lucas BIM

94 FINISHING TOUCHES
Testimonials from clients who have received the Lucas treatment

97 LOOKING FORWARD
Some final thoughts from Danny Lucas on the future of our company

98 CONTACT US
All the names and numbers you'll need to get in touch with the right people



LUCAS NEWS

Top stories and headlines from our part of the world



LONDON CALLING

Decorations programmes on London's most luxurious residential projects are now underway at Lucas. In addition to the prestigious Tower Bridge development from Berkeley Homes (see p.27 for details), we have also teamed up with construction company Mace on a 40-week decorations package at 3 Merchant Square, a 21-storey apartment block at Paddington Basin for developer European Land & Property. Also on the agenda is a first phase decorations package on 290 apartments at Greenwich Square in South East London, as part of a joint venture between Mace and Hadley Property Group.



PICK 'N' MIX

An in-house Dulux colour matching facility has been added to our equipment range at Lucas HQ. The investment has allowed us to provide clients with an uninterrupted, emergency supply of Dulux paints of every colour for a complete range of finishes. Securing the facility was the result of our close working relationship with Dulux, with whom we are a Contract Partner. Installed in our logistics centre at Wrotham, Kent, it has enabled us to handle all client requests for paint supplies, as well as deal with emergency requests for repainting and colour changes at any time without notice.



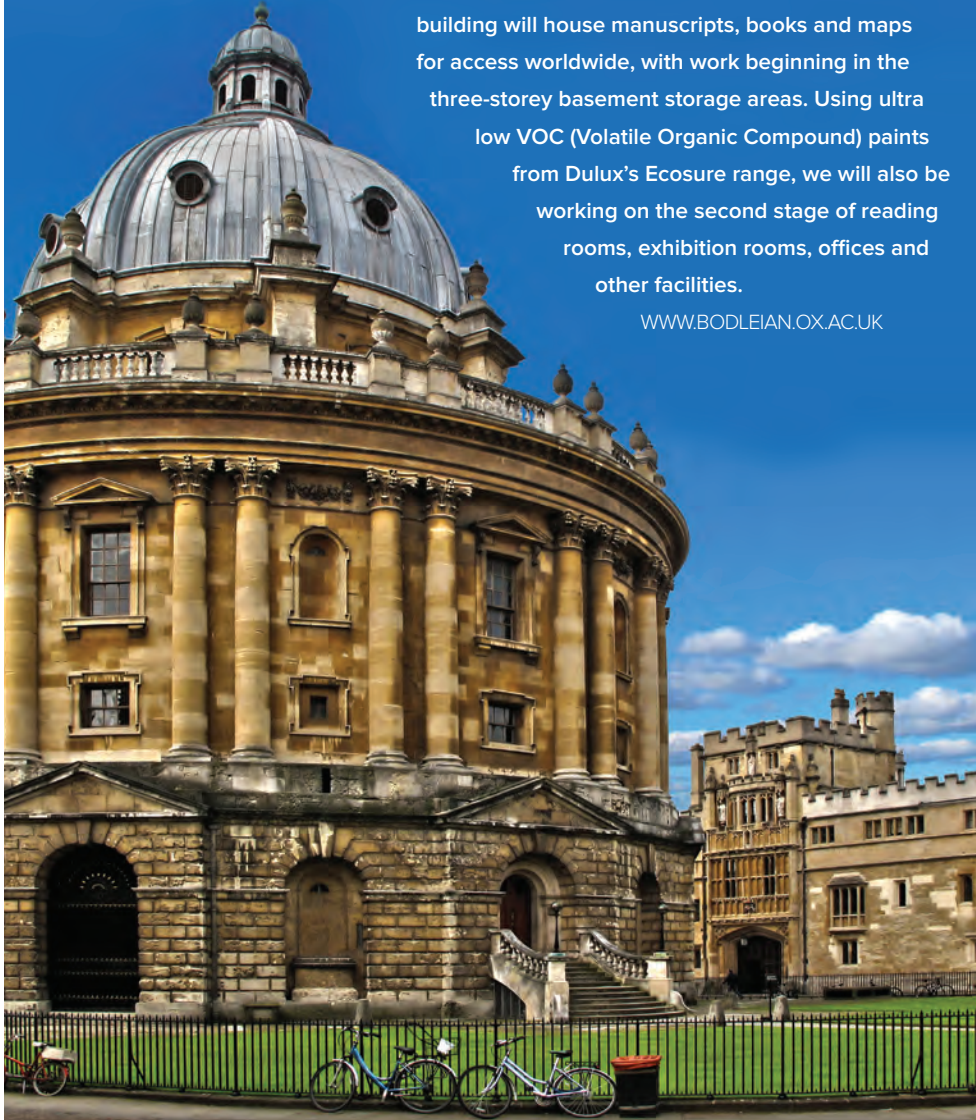
SCHOOLS' IN

The 2013-14 school year brought some new decoration projects our way in the education sector. First up was the comprehensive decoration of a new school built by Balfour Beatty for the Southwark Schools for the Future programme in Camberwell, while in Chiswick our work can be seen as part of a refurbishment programme at the renowned Arts Educational School (ArtsEd). Further Lucas makeovers have been underway at City University London's new 12-storey student accommodation block and its main teaching site in Northampton Square, plus a maintenance programme at the Cavendish campus of the University of Westminster.

BRUSHING UP

As part of an £80million restoration programme, we have won a major decorations project for the University of Oxford's Bodleian Libraries. The Grade II listed New Bodleian Library is being redeveloped to accommodate Bodleian's special collections for when it reopens as the Weston Library in 2015. The building will house manuscripts, books and maps for access worldwide, with work beginning in the three-storey basement storage areas. Using ultra low VOC (Volatile Organic Compound) paints from Dulux's Ecosure range, we will also be working on the second stage of reading rooms, exhibition rooms, offices and other facilities.

WWW.BODLEIAN.OX.AC.UK



SAFETY FIRST

Transport for London has accredited us with a bronze level standard in the Freight Operators Registration Scheme (FORS). Designed to ensure operators of large vehicles are running and operating their fleets to the highest levels of safety under the law, the funded certification scheme is being increasingly adopted by major construction industry clients such as Mace and Sir Robert McAlpine. Also a road safety initiative, FORS ensures additional measures are taken to improve road safety in and around London, such as the installation of special sensors on large vehicles to warn drivers of cyclists on the road.

WWW.TFL.GOV.UK



TOP MARKS

We have been awarded a five star rating from Achilles BuildingConfidence. Used widely in the UK construction industry, the independent accreditation service rigorously audits the management systems of supplier companies, including quality control, health and safety standards, environmental best practices and general working practices. Our five star rating indicates the consistently high standards we have met over many years. Our SQE Manager, Rod McInerney, says: "The audit sifts right through our management systems and benchmarks all that we do against best practices. I'm delighted to say that we've been given an absolutely clean bill of health."

WWW.ACHILLES.COM



LEADING FROM THE FRONT

A great business needs a great leader. Here at Lucas, that title belongs to MD and Executive Chairman Danny Lucas, who, over the past 20 years, has redefined the company with a pioneering and adventurous spirit. We catch up with the man himself to hear how it all happened



Anyone who knows Danny Lucas will no doubt be aware of his love of all things Apple. Indeed, the Executive Chairman and Managing Director of our company has taken a great deal of his inspiration in recent years from Steve Jobs' own career path, applying a similar level of innovation, commitment and determination to everything he does.

"Someone bought me a book," he explains. "I'd bought their products for over 20 years and had heard of Steve Jobs, but I didn't really know who he was. So a friend of mine who knew me quite well bought me his biography for Christmas and I just buried myself in it. It left a huge impact on me about how this guy had done things and how he'd tried to change the world almost."



↑ Danny Lucas, aged 15

While Lucas might not be as renowned a brand as the computer software behemoth, the same visionary seeds can undoubtedly be seen in its leader, who, for over two decades, has taken his fit out and fitting specialist company to the cutting edge of its industry.

Born in London and raised in Kent, the young Danny grew up around his father Sam's business (then known as 'S. Lucas Spray & Painting Contractors'), being exposed to an industry that he quickly realised he wanted to be a part of.

"I think the environment I was brought up in obviously triggered things that were already in me," he says. "I don't think it's just what you see that makes you who you are; sometimes you've already got something built in and you don't know it, but it gets stimulated and unlocked by something in the environment that you've seen."

Following the breakup of his parents' marriage, Danny had to relocate to a new school and make new friends at a young age. He soon fell out of love with education, but found his calling in 1982 when he went to work for S. Lucas at the age of 15. Having previously worked with his dad at weekends and during school holidays, he was immediately adamant about where he saw his future.

"It was the first thing I wanted to do and I didn't hesitate," he explains. "I had this vision back then, 31 years ago, that I wanted to take

forward what my dad had started and really create something more out of it. He's always been the guiding light for me and I've never looked back."

And with that, it was 5am starts and seven day weeks for Danny, who had to pay his dues with the dirtiest, grimeiest jobs imaginable. Following a year of hard labour as an apprentice, he attended a two-year course at MidKent College in Rochester, gaining his official City & Guilds qualification in painting and decorating.

"That was a fantastic grounding for me because it taught me how to do things properly," he says. "How to make a door look like a mirror with gloss."

Cutting his teeth as a professional painter, Danny's big break came in 1987 when he was given the chance to manage his first job.

Overseeing The Harlequin shopping centre in Redhill, he was also appointed to run onsite duties at Royal Holloway College in Egham, splitting his time between the two and eventually adopting the title of site foreman.

From there, the only way was up as Danny ascended through the ranks, first as a contracts manager and eventually being appointed as a Director by his father in 1991. Following visions in the late 80s of recognising Lucas as a quality focussed company, he gained the business its ISO 9001 accreditation in 1993, an industry standard related to quality management systems. Lucas senior later left for America to start up a property development business, formally naming Danny Managing Director by the end of the decade, which afforded him the freedom to take the business forward as he saw fit.

"We'd run the company together, so we were like brothers," Danny says of his bond with his father. "We've always had a very solid, close relationship and it was just a natural turning point of progression, really."

By 2010 Danny had risen even further, taking up position as Executive Chairman. Bringing his company well and truly into the 21st century, he secured a number of prestigious projects and contracts, including The Shard, the Olympic Stadium and a technology partnership with McLaren.

"I had this vision that I wanted to take forward what my dad had started and really create something more out of it"

↓ Danny Lucas with his father Sam Lucas and the late comedian Frank Carson, who was a regular at Lucas golf days



“I thought I knew it all at that point, but I learned so much more after my father left; it was like starting again as everything really did rest on my shoulders,” he explains. “But that obviously empowered me to continue growing the business and moving forward with successful clients and projects.”

Since then Danny has truly made Lucas his own. Following Sam’s return in 2005 as an advisor, Danny bought the company outright from his father, becoming the majority shareholder. Inspired by the brand recognition of Apple, the quality workmanship of Mercedes and the

meticulously high standards of McLaren, he has taken his father’s legacy in a more corporate and commercial direction, while keeping his roots intact. Standardising and rebranding the company’s identity, he has even gone so far as to employ the services of one Rob Janoff, acclaimed designer of the world famous Apple emblem, to update Lucas’ own logo. Never afraid to go that extra mile, he now looks back on his career with a shameless idealism that would no doubt make the late Mr. Jobs proud.

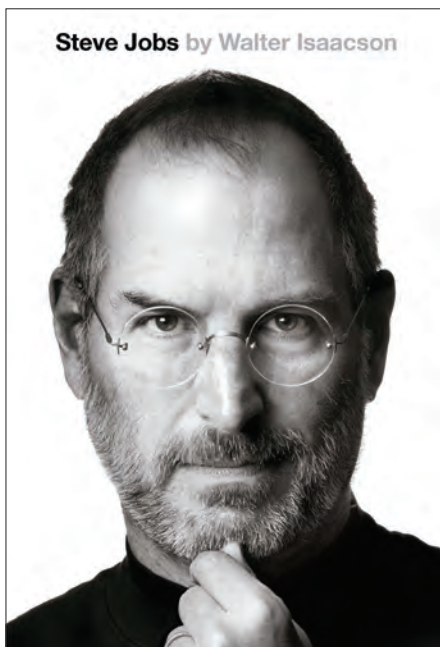
“If you don’t shake the tree, you’ll never know,” he hypothesises. “When you think

something’s impossible, all you’ve got to do is look around at the fact that other people who are no different to you have achieved things. If you believe in something and you want to make it happen, you really can do it.”

While only time will tell what the future holds for Lucas, one thing is certain; it’s in more than capable hands. Always looking to experiment and discover new things, there should be little doubt that, with Danny’s leadership, the company will continue to head in new and even more exciting directions. After all, if you don’t shake the tree, you’ll never know.

A Few of My Favourite Things

We hear from Danny about five of his top picks



Steve Jobs by Walter Isaacson

BOOK

Steve Jobs by Walter Isaacson

“This has probably left the biggest mark on me – I really soaked it up. The timing was perfect because I was exposed very much to cutting edge technology and, businesswise, I was ready for it.”



FOOD

Game

“I’m a massive meat eater so anything game-based tops the list for me!”



FILM

It's a Wonderful Life

“This is a classic Christmas film with a great story and a really good moral that I can watch with the kids. I love Christmas and the atmosphere of family.”



CAR

Mercedes

“The current Mercedes Benz S500, which is their trademark model, is by far the best car in the world.”

HOLIDAY DESTINATION

Majorca

“My family and I went there for the first time recently and it was just fantastic. A very friendly, beautiful island and a wonderful place.”



MEET THE TEAM

We introduce you to some of the key Lucas players throughout the publication



Ramunas Purnas
Sprayer

Fill us in on your background

I was born in Lithuania in 1979 and lived with my mother, father and sister until the age of 20. I graduated as a German language teacher in 2003, then lived and worked in Germany. In 2005 I came over to the UK and since 2007 have worked with Lucas.

And how did you progress within the company?

I started as a painter before gaining qualifications to become a mobile paint sprayer. Since then I have worked with different Lucas contractors as a finishing specialist.

Tell us about your work on one of Lucas' most recent projects

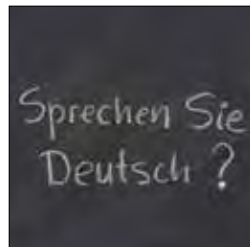
My latest job was on the British Sky Broadcasting Group's (BSkyB) meeting centre, where I sprayed the steelwork and decking using three different types of paint to cover a 17m high structure.

What do you do when you're not working?

I do appreciate my time off when I can be with my family and do what I like most – fishing.

Are there any other clients you would like to work with?

At this moment I think that Lucas works with the biggest UK construction companies and I hope that in the future we will start working with more overseas businesses as well.



Meet another member of our team on p.32

billericayglass

Specialist glass suppliers, processors and installers



Entrance Screens | Frameless Partitioning | Balustrading | Fire Rated Products | Frameless Shower Screens and Doors | Glass Floors | Mirrors | Coloured Splash backs and Work Surfaces | General Glazing | Solar Panels | Smart Glass Screens | Glass Bending | U.V. Bonding | Manifestation

T. 01268 732 772 F. 01268 572092

3,11 & 12 Hodgson Court, Hodgson Way, Wickford, Business Park, Wickford, Essex, SS11 8XR www.billericayglass.com / email info@billericayglass.com



LASERCUTTING SERVICES

UK's No1 Stencil Manufacturer and Laser Cutting Service

T: 01360 850389
E: sales@lasercutit.co.uk



Top Left to Right

EXTRA LARGE SIGNAGE

This 12M signage on the BRUICHLADDICH distillery wall was made up from 45 stencil sheets, produced in perfect alignment.

DECORATIVE VINYL

SUE GRIERSON'S lasercut designs brought the outside in for this Japanese Gallery interior.

ROAD MARKING

Extra large logo and info stencils for TOUR of BRITAIN were filmed from the air for TV.



Bottom Left to Right

SHOPPING CENTRE SIGNS

We produced large way-marking and Car Park numbering stencils for ST DAVID'S CENTRE, CARDIFF.

WALL ADVERTISING

This 5M gable end stencil featured in a TV ad campaign for ANCHOR BUTTER (BLAZIN STAR).

EXTRA LARGE PROJECT

We worked with S LUCAS on this OLYMPICS 2012 Legacy project. Over 550 Metre high stencils were required.

Laser cutting to London, Glasgow, Edinburgh, Liverpool, Manchester, Birmingham - around the UK and beyond



LUCAS



WHERE THE MAGIC HAPPENS

Since relocating to Invicta Business Park in Wrotham, Kent in 2010, we have developed our Head Office to include a number of innovative facilities. From a cutting edge logistics centre to our stylish graphics studio, join us on a grand tour of the Lucas fit out and finishing nerve centre

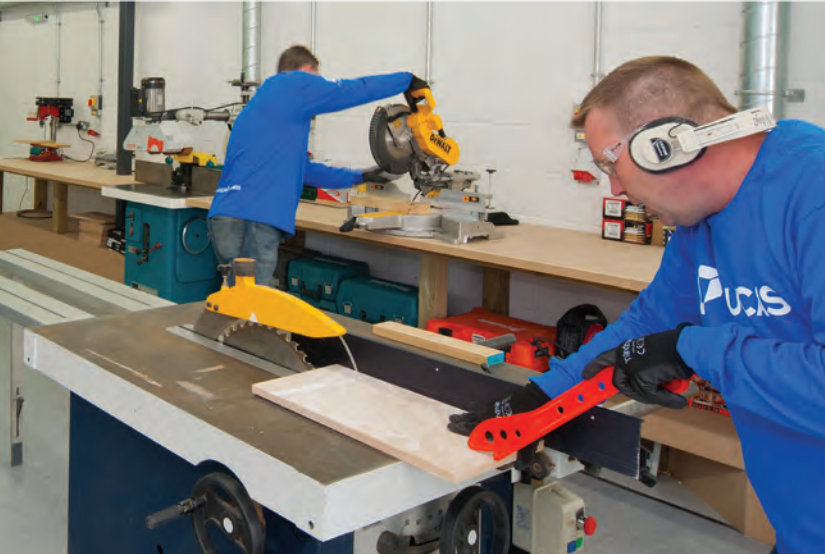
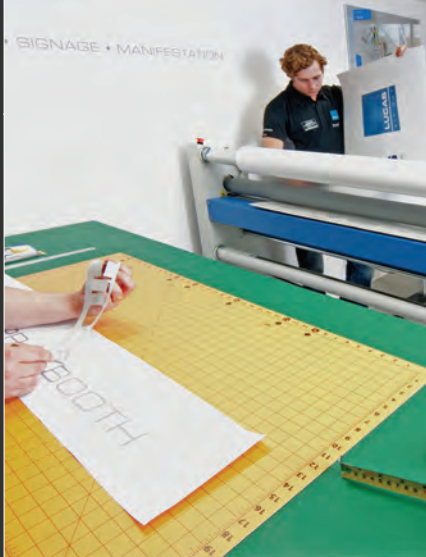


Before taking a tour around Lucas HQ, a brief word about our location near Wrotham; we're just off the M20, M25 and M26, so we have rapid, easy access to all our projects across London and the South East.

This is why we've built a logistics and consolidation centre alongside our offices. It enables us to pre-plan site work and gather all the materials required to complete our contracts in one place, making for maximum site efficiency and allowing us to dovetail our operations exactly to building schedules.

We have full control of site deliveries using our own fleet of vehicles. Our centre is like a supermarket where our operatives draw items from stock. Here we also disassemble and reassemble supplies into shrink-wrapped work packs and deliver them to site on a 'just in time' and 'just in sequence' basis. This optimises efficiency and is greatly appreciated by clients who don't want restricted site space cluttered with unused stock.

Next door to our logistics centre we have invested in a purpose-built joinery facility. The new factory and workshop allows us to build our own timber panelling, doors and frames, toilet cubicles and a wide range of joinery components.



It means our fit out and finishing service offering is now even more comprehensive, with design and development, quality and component supply completely under our own control. The new facility is fully equipped with an extensive range of the latest joinery equipment. It also has a bespoke extraction system to ensure the high quality and finish of the components we produce.

These components can be painted in our adjacent spray booth. The dedicated large scale facility allows us to provide clients with a range of valuable off-site painting options and complete perfect finishes to new or refurbished components. It has controllable airflows to ensure a safe, sterile painting environment and is temperature controlled for a strong, quick-drying surface finish.

So, we can take components from site and spray paint them perfectly, free from contamination and irregularities that are a risk when painting on site. Small items can be painted in batches, but the facility has the capacity to handle very large, bespoke items too.

Using conventional HVLP (High Volume Low Pressure) guns and airless pumps, we can even introduce electrical charges for electrostatic work.

We spray paint high volume components brought direct from the manufacturer with primers and undercoats where appropriate, to be finished on site, although the booth is ideal for delivering a high quality finish that might never be possible in a construction environment. Furthermore, we now provide a full colour and finish replication service for a broad range of pre-finished surfaces that typically become damaged on site during the construction phase, and require re-finishing to an exact

match. We have refurbished kitchen components, skirting boards and a whole range of joinery items faster, more consistently and therefore more cost-effectively than would be possible on site.

Thanks to our close working relationship with Dulux as a Contract Partner, we have also invested in a colour matching facility at Lucas HQ that allows us to provide clients with an uninterrupted, emergency supply of Dulux paints of every colour and for the complete range of finishes.

It means that we can handle all client requests for paint supplies, and in particular deal with emergency requests for repainting and colour changes at any time and on any day without notice. It also means we can easily adapt to project programme changes and new sequencing requirements.

Just along the way our HQ offices, built in 2005, house all our central and project support services, as well as our newly-built technology laboratories. From HQ we carry out project costings, plan our operations and support our operatives throughout the life of our projects. From here we manage our health and safety and our training programmes and, of course, the company's finance function.

We also have meeting facilities at Lucas HQ and a presentation suite to show clients not only the high profile projects we've worked on in recent years, but also to make a range of presentations to demonstrate the performance and technical qualities of our products.

Since becoming a technology partner of the McLaren Group, the sports car manufacturer and automotive engineer, we have invested in new laboratory facilities at HQ and use state-of-the-art colour metric and gloss measuring equipment, which operates within finite tolerances normally



“Our centre is like a supermarket where our operatives draw items from stock. Here we disassemble and reassemble supplies and deliver them to site on a ‘just in time’ and ‘just in sequence’ basis.”

seen in the automotive sector. Here we analyse materials, replicate both finish and colour, and in our paint formulation mixing shop, produce the exact paint required for the job.

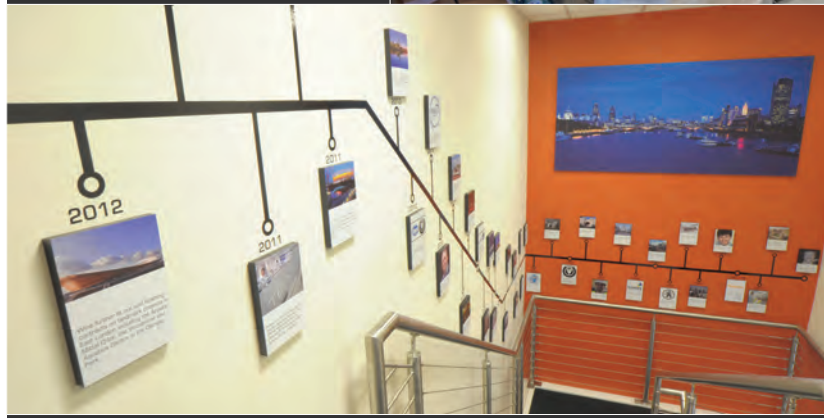
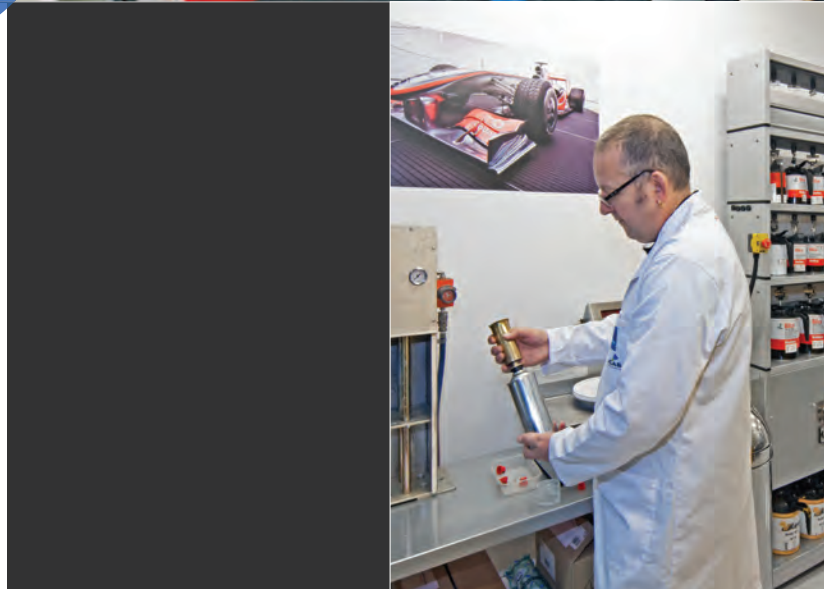
We provide efficient and thorough testing services for existing clients, as well as a full range of consultancy services to architects and engineers who want to make sure products they specify meet the highest industry standards, or who wish to develop products with bespoke specifications.

Laboratory tests include scrub resistance, PTV (Pendulum Test Value) slip resistance, colour testing and replication, gloss level tests, dry film thickness, coating flexibilities, hydraulic adhesion, lead content testing and Class ‘O’ flame resistance. We also carry out PTV tests on site.

Next door is our cutting edge graphics studio. We offer a range of graphics services, including project and corporate branding and signage, manifestations to large glass surfaces – including glazed partitions – and large-scale wrapped branding products used to create flexible corporate branding on vehicle fleets or specific artwork on site hoardings or the side of a building.

To support BIM we have also introduced a range of new services with our 3D design and modelling studio. We are using the latest software packages and the latest generation, 3D printers to assist clients with the visualisation, design, development and manufacture of bespoke components. Our service helps clients to imagine new ideas and possibilities to produce the perfect fit out solution.

You’re more than welcome to visit us at Lucas HQ at Wrotham and see for yourself the busy, ultra efficient centre of our operations and services. It’s a place we’re very proud of.



Dulux
TRADE
Trade & Trusted



*Trusted by Danny Lucas, Managing Director
and Executive Chairman, Lucas*

“I’ve worked in partnership with Dulux Trade for over 25 years”

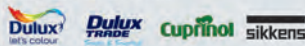
Dulux Trade is the UK’s leading paint brand. We have had the pleasure of working with Lucas for over 25 years on numerous iconic projects including The Shard, the London Olympic stadium and the McLaren Production Center. Lucas is also one of our approved Dulux Trade Contract Partners.

We are part of AkzoNobel, the world’s largest paints and coatings company with brands including Dulux Trade, Cuprinol, Sikkens and Polycell. We operate in more than 80 countries, employ over 55,000 people - and look forward to sharing success with Lucas for many years to come.

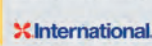
For further information visit duluxtrade.co.uk



Decorative Paints
Adding Colour to People's Lives



Protective Coatings
Delivering Solutions through Global Experience



Powder Coatings
Every Colour is Green



DULUX TRADE SPECIFIED
FOR WALLS, TRIM, METALWORK
AND CONCRETE PILLARS

A BRAND FROM
AkzoNobel



FAMILY VALUES

Since founding our company in the late 1960s, Sam Lucas has watched his legacy grow and seen future generations take the reins. While MD and Executive Chairman, Danny Lucas, has since filled those shoes, we meet our business' founding father to hear how it all began

It's funny how some of life's most defining moments can be set in motion by a single gesture.

In the case of Sam Lucas, it was the purchase of a spray gun, bought with money borrowed from Taylor Woodrow, once one of the largest housebuilding and general construction companies in Britain.

"They were the main contractor on all the big London tower blocks in the 1960s that I was working on," Sam explains. "They suggested that I form a company to do work directly for them. They actually lent me £50, which was quite a lot of money in those days [over £700 today], to buy a spray compressor."

Starting out in the construction industry in 1968 as a painter and sprayer, Sam has built a career and reputation that reaches back to the time he was 17. Establishing the then named 'S. Lucas Spray & Painting Contractors' in 1971, he quickly made a name for himself, winning project contracts for the MI5 headquarters and the Barbican in London, while also acquiring Muralplast, an Italian range of sustainable coatings and protective treatments.

"We've always had that reputation for giving a really good service and working seven days a week," he

says. "It's the way the company is – we're set up like that as a hands-on business. It's not a big industry in construction, so you soon get a good name; it's quite a small world and I think our strength has always been in our performance."

Since those promising beginnings, he has maintained an ethos of discipline and hard work, something that evidently rubbed off on his son, Danny, who came aboard in 1982 at the age of 15. Rather than taking

"We've always had that reputation for giving a really good service and working seven days a week"

Danny under his wing, however, Sam threw him in at the deep end, allowing him to earn his stripes and make a name for himself outside his father's shadow.

"Danny was put on site by me and deliberately ignored," says Sam.

"He had to prove himself, work a bit harder and win people's respect and he did that very quickly. When people started to say that I was being hard on him, I knew it was working and that I'd done my job. It had the desired effect."

Such dedication and commitment to

doing things the right way is a trait that has certainly cost Sam over the years, as he has seen two marriages decline as a result of building his business empire. Nonetheless, it has stood the company in good stead ever since, with Danny taking his father's lessons and applying them to Lucas going forward, while also bringing his own unique vision along with him.

"Danny has taken it to another level with quality," Sam explains. "It's always been his thing to do it on his own; he's driven to put his mark on the company and he's doing that successfully. Danny's investing for the future and I hope that he doesn't lose the family touch in the business and remains hands-on. You can't put a value on that."

There certainly doesn't appear to be a risk of that happening anytime soon, as a new generation of the Lucas dynasty has come aboard the business, including Sam's daughter Katie Lucas (Head of Project Support) and sons Adam Lucas (R&D Manager) and Ben Lucas (Fit Out Project Manager). Continuing to work alongside Danny and carry Sam's legacy forward, there can be little doubt that they have their father to thank for laying the groundwork for a bright and promising future.

PRIDE OF PLACE

We've been fortunate enough to work on some remarkable projects over the years, including many of London's most cherished and recognisable landmarks. From the 2012 Olympic Park to an exclusive residential development at Tower Bridge, we look back at some of our favourites

On top of the world

THE SHARD

CONTRACTOR: MACE LTD

CLIENT: SELLAR PROPERTY GROUP

VALUE: £2MILLION

ARCHITECT: RENZO PIANO

Of all the magnificent buildings that make up London's famous skyline, there are few as awe-inspiring as The Shard. The tallest building in Western Europe, it measures up to 1,016ft and offers 360° angles of the capital's landscape from the breathtaking View from the Shard, the city's highest viewing gallery.

If its crystalline façade wasn't impressive enough, the building's interior boasts a variety of features that speak for themselves; enviable restaurants, cutting edge office facilities, exclusive residential apartments

and the five star Shangri-La Hotel can all be found under one roof, culminating in a fusion of business and culture that has redefined London's reputation as one of the most highly regarded cities in the world.

The three main restaurants that can be enjoyed throughout the building offer plenty of dining possibilities. Located on level 31 is Aqua Shard, which serves innovative contemporary British cuisine, combined with fantastic views from its restaurant, private dining area and three-storey high atrium bar.

One level up on the 32nd floor is Oblix,

which caters to more urban, casual dining without compromising on sophistication. Entering through the busy kitchen, guests can enjoy live music, unique cocktails and a New York inspired menu.

Finally, Hutong, found on the 33rd floor, serves the diverse cuisines of Northern China and is based on the popular eatery of the same name in Hong Kong. The subtlety and complexity of the menu is complemented perfectly by the traditional Chinese lanterns and 'Moon Gates' that line the restaurant's interior.



From the early stages of construction we began painting and decorating all basement and core back of house areas, including corridors, perimeter walls and columns, staircases and lift lobbies, as well as base painting certain public areas.

Supervised by our site based Contracts Manager, Yan George, and completed at a cost of £2million, this 'shell and core' decorations package involved our team applying specialist epoxy floor coatings to seal and waterproof concrete surfaces, protecting them from corrosive liquids and

making them cleanable and dustproof. We also made full use of our dedicated logistics centre to sequence supplies on a 'just in time' basis in order to suit the site's demanding construction programme.

As The Shard neared completion, we undertook an important fit out programme of 38 basement and mezzanine floor areas that make up the offices of the building's management company. In addition to installing raised flooring, we also carried out all the drylining, erected suspended ceilings, installed all the electrical and mechanical

engineering systems and decorated throughout.

The Shard remains a testament not only to the possibilities of our own versatility when taking on such significant projects, but also to London's limitless potential to inspire, amaze and set the standard as one of the world's most recognisable and innovative capital cities.

THE SHARD ■ 32 LONDON BRIDGE STREET
LONDON ■ SE1 9SG
WWW.THE-SHARD.COM



Fit for a King

CAFÉ ROYAL (LONDON)

CONTRACTOR: MACE LTD

CLIENT: ALROV

VALUE: £500,000

Once word got around about our work on The Savoy Hotel, it wasn't long before London came calling once more. This time we teamed up with Alrov Luxury Hotels for the restoration and redevelopment of the Café Royal on Regent Street.

Originally built in 1865, this historic London landmark is the second instalment of The Set, a collection of hotels in the UK, Paris and Amsterdam that aim to redefine luxury living and sophistication in the hospitality industry. Now housing 160 lavish bedrooms and suites,

Café Royal was rebuilt in the 1920s and has stood the test of time as one of London's most recognisable and exquisite locations.

Refined dining experiences capture all the glamour, sophistication and elegance of London's vibrant social scene, with The Domino, The Grill Room and The Ten Room providing gourmet meals in captivating surroundings.

Appointed by construction manager Mace, we undertook another tightly scheduled refurbishment project, focusing on the feature six storey helical stairs that ascend in the

eastern side of the hotel. Our restoration team brought the complex handrails and spindles of the staircase back to life by hand burnishing all the brasswork and painting all the risers.

What's more, we were responsible for renovating, replastering and decorating the walls of the lobbies served by the staircase at each level of the hotel, while also refurbishing and polishing the lobby doors.

CAFÉ ROYAL ■ 68 REGENT STREET
LONDON ■ W1B 4DY

020 7406 3333 ■ WWW.HOTELCAFEROYAL.COM

bhd architects

BHD Architects are an award winning Architects practice based in Sevenoaks, Kent

Established for 28 years, BHD Architects are one of the largest West Kent based Chartered Architectural practices providing a full range of RIBA architectural services from our centrally located office in Sevenoaks, Kent.

BHD Architects have built up an impressive portfolio of local, national and international clients working on a wide variety of projects and have won many awards and commendations.

BHD Architects have been involved in a wide range of commercial, leisure and large residential projects with particular experience in specialised areas of design and construction.

These include:

Masterplanning | Residential development | Bespoke housing | Entertainment and leisure |
Golf courses and clubhouses | Health clubs | Hotel and conference suites | Offices |
Refurbishment and fit out | Health centres | Garden centres | Restoration of historic buildings |
Sports facilities and swimming pools



The practice is registered with the RIBA and the RICS and therefore we are able to provide an up to date service ensuring that all relevant professional requirements are fully met.

Innovative information technology allows our fully trained design team to produce high end presentation graphics alongside detailed working drawings.

www.bhdarchitects.co.uk

T 01732 452200 E info@bhdarchitects.co.uk

bhd architects Oak House, London Road, Sevenoaks, Kent, TN13 1AF



Going for Gold

QUEEN ELIZABETH OLYMPIC PARK

CONTRACTOR: SIR ROBERT M^cALPINE FOR TEAM STADIUM/LOCOG

CLIENT: OLYMPIC DELIVERY AUTHORITY/LOCOG

With the national frenzy of the London 2012 Olympic Games reaching fever pitch, we knew we had to deliver something truly spectacular when it came to completing a number of fit out and finishing packages for the Olympic Stadium and Olympic Park in East London.

Working to a tight schedule and delivering a high level of service every step of the way, our team was responsible for installing suspended ceilings and drylining plasterboard walls in a number of back of house areas and corridors in the stadium over a period of four months. We also tiled floors and walls in the toilet and shower areas of the athletes' changing rooms, where we completed a series of general decoration packages.

Requiring intensive team work and a deft handling of the logistics of a busy site, our work included the application of specialist non-slip and hygienic coatings to all the floors and walls in the catering village built next to the media centre, which was used by the thousands of reporters covering the 2012

Olympic and Paralympic Games.

We also decorated a range of temporary shops and buildings known as the 'High Street' next to the media centre, which included a range of familiar British retail outlets such as banks, chemists and coffee shops. Further packages included the complete decoration of a temporary media facility at the Aquatics Centre, plus newly-created back of house areas at the Velodrome during its fit out phase.

Likewise on our agenda was the fit out and decoration of the two viewing platforms, ticketing hall and visitor facilities at the ArcelorMittal Orbit observation tower at the Olympic Park in East London. Designed by artist Anish Kapoor and structural engineer Cecil Balmond, this landmark structure was erected by Sir Robert M^cAlpine on the site of the 2012 London Olympic and Paralympic Games, adjacent to the Olympic Stadium itself. At 375ft, it is the UK's tallest sculpture, complete with two observation decks for visitors at 262ft and 249ft, providing stunning views over the Olympic Park and

much of London.

Our work didn't stop there, as we installed insulation to the structural steelwork to prevent cold seeping into the visitor areas. Complicated drylined curved walls were also fitted, as well as a bespoke Lindner perforated system to create a feature ceiling for the observation decks. Furthermore, we put in bespoke curved hardwood handrails and laid a special four-layer Sika resin floor system.

The team created and fitted out visitor facilities on both observation decks, which have been widely praised and again included curved walls, dictated by the overall structural shape of the tower. We also decorated throughout and undertook a number of other decorating packages in addition to working extensively on the Olympic Stadium itself, resulting in a winning performance.

QUEEN ELIZABETH OLYMPIC PARK

LONDON ■ E20 2ST

0800 072 2110

WWW.QUEENELIZABETHOLYMPICPARK.CO.UK

HOW SCAFFOLDING LTD

DOMESTIC - COMMERCIAL - INDUSTRIAL

We have supplied expertise, experience and access scaffolding on various projects, some very complex and needing our engineer to supply detailed drawings and calculations and our safety consultants to have their input. All these ingredients add up to a successful partnership with our client. We are a medium sized scaffolding company and have been trading for over 30 years.



HOW Scaffolding Ltd are pleased to be associated with and be a supplier to Lucas Fit Out.



Lay of the Land

ONE TOWER BRIDGE DEVELOPMENT

CLIENT/CONTRACTOR: BERKELEY HOMES

ARCHITECT: SQUIRE & PARTNERS

For many, waking up to a penthouse view of the London city skyline, surrounded by the plush furnishings of a contemporary apartment, is the stuff of dreams. For a lucky few, however, dreams will soon become reality with the One Tower Bridge Development.

Teaming up with Berkeley Homes, we have been appointed to carry out decorations programmes on the most exclusive residential projects currently underway in London. With prices starting at £785,000, it's no surprise that residents will get to enjoy the most lavish living space in the heart of the city.

Featuring 400 five star apartments and luxury penthouses across nine blocks, this stunning development is situated on one of the last great riverside sites in London – the south bank of the River Thames, right next to Tower Bridge and opposite the Tower of London. Within walking distance of the Tate Modern, Borough Market and the Old Vic theatre, residents will be in a prime position for enjoying the very best of what London has to offer.

Architecturally designed by Squire & Partners, each building is named after one of the Great British Royal Houses and has been designed to reflect its immediate environment. Most feature balconies or terraces and some benefit from views of the River Thames, perfectly capturing the romance of the city. Further amenities include a 'residents only' health club, with a sauna, steam room, Jacuzzi and pool, as well as a private courtyard garden, business lounge with virtual golf and a 24-hour concierge service managed by Harrods Estates - all of which means top quality service around the clock.

One of the main highlights is undoubtedly The Lalit, a boutique hotel located in the beautiful Grade II listed St Olave's building, where residents can take advantage of a signature restaurant and fashionable bar. In addition to the remarkable views and first-class amenities, the heart of London is just a walk away, where cultural favourites such as St Paul's Cathedral and The Globe theatre meet the finest dining and shopping money can buy, including big name brands such

as Gucci, Tiffany & Co and Lulu Guinness.

Working closely with Mace, we are using the latest technologies to maximise quality control. Our operatives are completing on site electronic checklists accessed on handheld devices via a specialist app. This will ensure the quality of all our work is checked, inspected, snagged and signed off, speeding the satisfactory completion of works and handovers.

Our strong track record for decorating luxury apartment developments in the wealthiest, most desirable areas of London has meant that clients and contractors know they can count on us to bring organisational reliability and top quality workmanship to complex residential construction projects. As one of the most breathtaking residential developments in London, One Tower Bridge will be in a league of its own.

ONE TOWER BRIDGE DEVELOPMENT
 TEMPORARY SALES LOUNGE
 THE PAVILION ■ EMPIRE SQUARE
 LONG LANE ■ LONDON ■ SE1 4NA
 020 7871 0011 ■ WWW.BERKELEYGROUP.CO.UK



Reaching New Heights

EMIRATES AIR LINE (LONDON)

CONTRACTOR: MACE LTD

CLIENT: TRANSPORT FOR LONDON

VALUE: £2MILLION

ARCHITECT: AEDAS

In preparation for the London 2012 Olympic Games, we embarked upon another milestone in the capital's infrastructure, pushing our abilities and commitment to our work, quite literally, to new heights.

Contracted once again by Mace, we undertook the complete internal fit out of the two stations that connected the Emirates Air Line, the UK's first urban cable car system. Also known as the Thames Cable Car, the service carries passengers 295ft above the River Thames on a 1km ride between the Greenwich peninsula and the Royal Docks, boasting breathtaking panoramic views of the London skyline at a greater height than the nearby O2 Arena. Providing a crossing every 15 seconds, up to 2,500 passengers are carried in each direction per hour – the capacity equivalent of 50 bus trips.

First announced in July 2010, construction began in August 2011. Based on Monocable Detachable Gondola (MDG) technology, it uses

a single cable for both propulsion and support, a reportedly cheaper system that is quicker to install than the more complex three-cable process that allows for larger capacity cars. The project as a whole cost an estimated £60million and would mark a significant tourist attraction for the world's most prestigious sporting event, so we were more than happy to contribute and put the Lucas stamp on this exciting new landmark.

With the opening of the Olympic Games looming, we were up against the clock to complete the project in time, our team frequently facing a 24/7 schedule, helping to design, manufacture and install a variety of bespoke works at short notice. All partition walls, floor and ceiling finishes were included in our services for the project, as well as toilet, shower and kitchen areas, plus specialist desks for the ticket offices and all decorations.

Due to the unique nature of the fit out, many of the items were bespoke, such as stainless steel ceilings, Granazzo floor tiling laid to a high

specification and complex ticket desks made from Corian and stainless steel. Our services didn't stop there, as we were also involved with structural and architectural metalwork, blockwork walls, specialist concrete works and roof waterproofing by the time of completion. Our team also constructed both of the station control rooms, encompassing two-storey, stainless steel buildings at platform level.

With an average ridership of 31,601 passenger journeys a week, the service opened on June 28 2012, ahead of schedule and in good time for the Olympic Games. As a further testament to our ability to incorporate and manage a wide array of trades and disciplines in very challenging and time restrained circumstances, the Emirates Air Line epitomises our commitment to quality and our enthusiasm for ideas that break new ground as the first of their kind.

We were also requested to complete the control office extension, which has recently been completed this year.



EMIRATES ROYAL DOCKS ■ EMIRATES AIR LINE
27 WESTERN GATEWAY ■ LONDON ■ E16 4FA

EMIRATES GREENWICH PENINSULA
UNIT 1, EMIRATES CABLE CAR TERMINAL
EDMUND HALLEY WAY ■ LONDON ■ SE10 0FR

WWW.EMIRATESAIRLINE.CO.UK



Let Us Entertain You

SSE HYDRO

CLIENT/CONTRACTOR: SCOTTISH EXHIBITION CENTRE (SEC)

ARCHITECT: FOSTER + PARTNERS

When it comes to the entertainment industry, thinking big is essential. Playing host to both national and international music stars, as well as global entertainment and sporting events, the SSE Hydro in Glasgow does exactly that.

With a seating capacity of 12,000, the Hydro opened on September 30 2013 at the Scottish Exhibition & Conference Centre and will put on 140 events a year, attracting an annual audience of 1million visitors. As the largest entertainment venue in Scotland and the fifth busiest in the world, it stands alongside the likes of Madison Square Garden and the O2 Arena, with the

potential to inject £131million into the local economy each year.

Our job this time around was to develop a striking ultramarine paint for Foster + Partners, the architects behind the Hydro, to decorate this extraordinary arena.

Sourcing a rare pigment from the Far East, we mixed it with a perfectly clear vinyl matt base and a special formula of thickeners, producing a paint that was perfectly suited to the stadium's commercial needs.

Foster + Partners worked with famous graphic designer Per Arnoldi, who wanted major internal surfaces decorated in a specific strong ultramarine colour to create a

dramatic effect for visitors. But although this colour has been a long time favourite of artists over the centuries, it is not normally available in large quantities for commercial painting.

Originating from Afghanistan, the pigment produces clean 'red' shades of blue now seen in the Hydro, resulting in a stunning internal appearance that serves to enhance the experience of a variety of entertainment enjoyed by spectators throughout the year.

HYDRO SECC ■ EXHIBITION WAY

GLASGOW ■ G3 8WY

0141 248 3000 ■ WWW.THEHYDRO.COM

FOSTER + PARTNERS AND MIGUEL YOUNG



Meet the Team



Katie Lucas
Head of Project Support
& Training

Tell us about your background

I lived in Florida from the age of eight and moved back to the UK when I was 15; I then attended Sutton Valence School, Kent, where I completed my GCSEs and A Levels. While in the middle of my A Level study leave, a role became available at Lucas and I was given the opportunity to start training here, which I was very excited about. After about three months I decided to decline my university offers where I was going to study Public Relations and instead began working here fulltime when I was 19 years old. I started doing admin/accounts work and over the past four and a half years have become more involved in project support. I have always grown up around a business environment, with my dad Sam and eldest brother Danny running Lucas. The way they have both taken the company from my dad only borrowing £50 for a spray gun to now, is something that really inspires me.

What's your day-to-day role at Lucas?

I am doing RAMS on a daily basis, booking guys on training courses and putting programmes and tenders together with Frank Gallagher, our Construction Director, for our next potential fit out project. I also answer the phone, order materials, create presentations and gather feedback from customers. I may even be out on site doing a site file audit. My day can really consist of so many things and always varies, which keeps it exciting.

Where do you see the company going in the future?

I can see Lucas going above and beyond what we have achieved so far. During my time here I have witnessed us becoming McLaren partners and completing full decoration packages on major projects such as The Shard and the 2012 Olympic Stadium. We have moved offices and now have three units on the business park, plus we are in the process of releasing our new Pro Tools range.

Every day is exciting at Lucas and you never know what's coming next.

What do you do when you're not working?

I love spending quality time with my partner, family and friends. I'm a Sunderland football supporter, so I enjoy going up there with my dad and brothers when I can, even if we are bottom of the league! Cooking is another passion, so I am always looking through my Jamie Oliver books. I have also started playing the piano again, which I really enjoy; it's quite relaxing. And of course, like all girls, I love to shop! I also like going to my local pub on a Friday and having a well deserved end of the week drink.

What's your all-time favourite film?

I'm not a big TV person, but my favourite film of all time has to be *Titanic*. I find it really interesting and also enjoy the love story.



Meet another member of our team on p.40

We design, supply, install, commission, service and maintain refrigeration, air conditioning and a huge range of other climate control equipment to all sizes of business.

In 8 weeks Adcock installed a highly energy-efficient heat pump air conditioning system using river water in the water-cooled condensing units.

T: 01634 673 870 E: chatham@adcock.co.uk

"Adcock achieved both their normal high standards of installation and customer care, which gave us both a project that we should be very proud of."

www.adcock.co.uk



Est 1964

ADCOCK

REFRIGERATION
AIR CONDITIONING

Inkworks® is a multi-device platform which gives you total control over the in-house design and production of your e-forms and the devices you use for data capture. With Inkworks®, e-forms can quickly and easily be produced, managed and data captured on these forms, with either a digital pen or tablet, and can be integrated into a range of back office systems.

Features on Inkworks® include:

- ✓ Self-create your e-forms and associate e-form intelligence and workflows.
- ✓ View the completed e-forms in Form View in Inkworks®.
- ✓ Navigate through the app with a simple User Interface.
- ✓ Authenticate to Inkworks® using your registered login credentials.
- ✓ Automatically render an e-form upon successful authentication.
- ✓ Update an e-form manually within the application if changes to the e-form have been made.
- ✓ Virtual keyboard/Stylus/finger is used for text entry.
- ✓ Ability to send the inputted data to Inkworks®.
- ✓ View a simple history section on the app for successful and non-successful transactions.
- ✓ Send e-form data via 3G or WiFi.
- ✓ Supports online and offline sending.
- ✓ Attach additional files such as photo, video and office templates.
- ✓ GPS lookup.
- ✓ Job creation and management.
- ✓ Integration into Google Docs, Dropbox and Inkworks® Dox.

Compatibility: Android; iOS; Windows 8

destiny. technology on the move®



"We are maximising the use of Inkworks® from Destiny Wireless by using tablet devices for our digital data capture needs. We have invested in the latest technology to help streamline our processes including our Payroll and Purchase Order systems. We would recommend Destiny Wireless as a solutions provider"

Danny Lucas

Executive Chairman &
Managing Director of
Lucas UK



08458 558 855
sales@destinywireless.com
destinywireless.com





Professor Greenslade

Although not a real professor, we see our Technical Services Manager, Dave Greenslade, that way as his knowledge and skills are second to none. Our paint and finishing guru highlights some of the remarkable technologies and services we have to offer in our state-of-the-art paint lab

Throughout my career I've held a number of senior technical and troubleshooting posts in the paints and surface treatments sector. While working with companies like ICI, Horace Cory and Ellis & Everard, I dealt with Lucas for over 30 years, so knew their way of working and their passion for quality and innovation.

Lucas wanted to bring technology based services to the fit out and finishing industry. In 2012 we invested heavily in a new laboratory, launching a complete range of technical testing and product development packages for paints and other surface treatments.

We also have the offsite spray booth; it has controllable airflows that ensure a safe, sterile painting environment and is temperature controlled for quick drying

or even baking surfaces, resulting in a strong surface finish. This facility allows our operatives to take components from site and spray paint them to a perfect finish, free from contamination and irregularities that are a risk when painting on in these environments.

It provides an ideal setting to paint a whole range of bespoke joinery items, bracketry for steelwork, balustrades, grills and vents. Small items can be painted in batches, but the facility has the capacity to handle very large, bespoke items too. We were even able to spray paint thousands of metal air transfer grilles for doors on the 2012 Olympic Stadium in over 20 different colours as part of the colour coding system for the Games – a very exciting project to be involved in!

The lab services get a lot more technical – I suppose that's why I've been named

'Professor' by my colleagues! Laboratory tests include QUV accelerated weathering, scrub resistance and PTV (Pendulum Test Value) slip resistance. Additional features comprise colour testing and replication, gloss level tests and dry film thickness, as well as coating flexibilities, hydraulic adhesion, lead content testing and Class 'O' flame resistance. We are also able to carry out PTV tests on site, which we achieve by measuring colour wavelengths verses reflectance via our portable micromatic test equipment.

I remember one of our clients had an issue with some doors onsite. The Place at London Bridge was due for handover on Monday and some specialist metal doors had been scratched, so on the Sunday before handover myself and Adam [Lucas, R&D



Manager] visited the site with the portable micrometer to match the colour. We then came back to the lab, formulated the paint and it was applied that same day! I was a little concerned as the doors had been powder coated, making it more difficult, but we succeeded completely. This is how Lucas provide a service that can't be found anywhere else. Olly Clarke, the Project Director at Mace, was so impressed with the service and it allowed the project handover to go smoothly on Monday.

The professor and his team saved the day!

That's why one of my favourite machines is the colour matching and paint production device. It allows us to provide clients with an uninterrupted, emergency supply of Dulux paints of every colour and for the complete range of finishes; it's all very clever, the

technology we have these days!

I also want to get my hands on some of the graphics tools. This means that manifestation to large glass surfaces – including glazed partitions, project and corporate branding and signage – can be produced, in addition to large-scale wrapped branding products used to create flexible corporate branding on vehicle fleets, or specific artwork on site hoardings or the side of a building.

For our 3D design and modelling capability, we are using the most recent SolidWorks software and the latest generation, 3D printer to assist clients with the visualisation, design, development and manufacture of bespoke components. Our service helps clients to imagine new ideas and possibilities to produce the perfect fit out solution and also ties in with Lucas BIM.

The lab services get a lot more technical – I suppose that's why I've been named 'Professor'



FIVE STAR SERVICE



In 2010 we were commissioned by international hotel and resort group, Fairmont, to work on The Savoy, one of London's most famous and prestigious hotels. Here's how Lucas reached the height of luxury



There are certain buildings that never fail to evoke a sense of unique style, timeless glamour and elegant majesty. From The Ritz to The Grosvenor, grand hotels have always captured the romance of city life, catering to the rich and famous and promising luxury on every floor.

None more so, though, than The Savoy in London.

Situated along The Strand on the banks of the River

Thames, it has seen the likes of Sir Winston Churchill, Frank Sinatra and Audrey Hepburn pass through its doors. As one of the many worldwide establishments from the Canadian Fairmont Hotels & Resorts Group, this dazzling building stands alongside the likes of The Plaza in New York City, comprising part of an impressive portfolio for a company that operates in 19 different countries across the world, including Barbados, Singapore, Egypt and Saudi Arabia.

Now boasting a total of 268 rooms, The Savoy was originally built by Richard D'Oyly Carte, an English talent agent, theatrical impresario, composer and hotelier in the latter half of the Victorian era. Funded by the profits generated from the operas of Gilbert and Sullivan, the hotel opened on August 6 1889 as the first luxury hotel in Britain, featuring electric lights,





← Upper Thames Foyer

→ Beaufort Bar

lifts, hot running water and many other innovations of the period. Today, panoramic views of the River Thames make this the hotel of choice for anyone wanting to soak up all the opulence and grandeur that our capital has to offer.

Appointed directly by The Savoy to carry out a specialist refurbishment and finishing programme, we set out on a demanding venture that would ultimately span a year. Since this was to be part of the completion phase of the major £220million, three-year refurbishment schedule of the entire hotel by Fairmont, we knew we were involved in something particularly special.

Such enthusiasm isn't without good reason, as we were exposed on a daily basis to a range of styles that dated back to the dawn of the 20th century. The refurbishment design combined the two aesthetics of the original – the Edwardian style of the buildings opened in 1889 and added to in 1904 by the architect Thomas Colcutt, and the Art Deco style that was introduced to The Savoy in the late 1920s and 1930s by Sir Howard Robertson.

With this inspiring backdrop against which to get started, we were tasked with the meticulous restoration and finishing work to floors, walls and ceilings in a number of the hotel's famous public rooms, including the River Room, Lincoln Room and the Manhattan Room and bar, as well as other public areas in the hotel.

"We had a wonderful relationship with the architects and designers, with whom we had to work hand in hand to achieve the desired quality standards and unique character demanded," says Richard Wilson, Senior Project Manager on The Savoy.

Indeed, the Edwardian and Art Deco themes so rich throughout the Savoy required careful, specialist treatment. These included replacing stretched fabric panels, reburnishing elaborate ballustrades and ironwork and the investigation and matching of original colours, as well as detailed repair and decoration of ornate cornicework, repointing of marble surfaces, repair of polished joinery and the refurbishment and replacement of intricate light fittings.

"It was certainly a new experience for me," says Richard. "During the first six weeks of the project we worked in a standard construction site environment, however, the following year was spent carrying out major refurbishment works within a live, working five star hotel environment."



“It was a fantastic opportunity to work upon such an iconic building. The Savoy is world famous not just because of the five star service, but also because it is a building of considerable character”

- RICHARD WILSON, SENIOR PROJECT MANAGER FOR LUCAS



FUN FACT

Savoy Court, the private street leading up to the hotel’s entrance, is the only road in the UK where vehicles are required to drive on the right hand side. This has been the case for over 100 years, the most popular reason being that it was an attempt to please American tourists

The subsequent 12 months saw Richard and his team carry out works directly for the hotel ownership. With every area of work being completely bespoke, they had to think on their feet and approach each task as if it were a new project within its own right.

Accordingly, a complete change of approach was called for. While the standard of our work was always maintained, the paying guests were of paramount concern, and all other considerations such as programme, quality and cost had to work around them.

“Obviously cleanliness, discretion and tact became our trademark during this period, and it is safe to say that the visiting guests were completely unaware of our presence, which was a great achievement by my team,” says Richard.

As we completed the works to the highest standards and strictest timetable, we were asked back by the client to complete the refurbishment works for a number of bedrooms in the iconic hotel. Like the Olympic Stadium, we were left with a project that we are immensely proud to have worked on and contributed to, as Richard concludes.

“To be able to say that we carried out refurbishment work to this incredible building and to have had the opportunity to add to the quality and character of this iconic hotel is a source of great pride to me and could be considered the pinnacle of our industry.”

We couldn’t have put it better ourselves; after all, it’s not every day you get to ‘spruce’ up a five star, world famous London hotel. With any luck, our relationship with Fairmont will hopefully be a long and fruitful one, but in the meantime, it’s good to know that, behind all the glitz and the glamour, there are some very solid foundations indeed.

THE SAVOY ■ STRAND ■ LONDON ■ WC2R 0EU
 020 7836 4343 ■ SAVOY@FAIRMONT.COM
 WWW.FAIRMONT.COM/SAVOY-LONDON



Meet the Team



Richard Wilson
Senior Project Manager

What's your background?

I've worked for the Lucas group for almost 14 years. Prior to this I was a self employed shop fitter, domestic general builder and landscape gardener. Before working in the construction industry, I studied law and intended to pursue a career as a lawyer.

Tell us about your role in the business

As a Senior Project Manager, my duties include design, drawing co-ordination, procurement, health and safety, site management, quality, commercial management and project delivery.

Which of Lucas' projects are you most proud of?

It's difficult to single out just one project because I've been fortunate enough during my time with Lucas to work on some truly iconic ones, including shopping centres, skyscrapers and world famous hotels (not least the Savoy refurbishment).

I would have to say that the Emirates Cable Car in North Greenwich really stands out because it's such an unusual project and I'm sure that there will not be a similar structure in the UK in my lifetime.

What do you do when you're not working?

I have a vibrant family with three children and two dogs, so much of my time outside of work is focused on them. I live beside the sea and enjoy sailing and fishing when I can find the time.

If you could have worked on any historic or contemporary building, which would it have been?

I really like the Gherkin in the city of London and wish I could have participated in the construction or fit out of this famous building. However, as I mentioned before, I've been fortunate enough to have worked on most of my favourite structures.



Meet another member of our team on p.56



- ✓ Acoustic and Fireproof Sealants
- ✓ New build & Refurbishment Work
- ✓ Refrigeration & Industrial Kitchens
- ✓ 2 Part Epoxy Resin
- ✓ All types of window and door frames
- ✓ Domestic sealant: kitchens, bathrooms, conservatories etc
- ✓ And many other types of sealant application

All our site operatives hold CSCS cards and are qualified to NVQ Level 2 and trained in all aspects of sealant application.

30 Chenies Drive, Steeple View, Basildon, Essex SS15 4AE

Office: 01268 454258 | Mobile: 07947 149978

andyscates@hotmail.co.uk



EST. 1990

HARDER, BETTER, FASTER, STRONGER

Technology is moving quicker than ever, becoming more affordable and readily available to consumers who are after the latest and greatest techie hardware. We round up 10 of the best gadgets on the market and hear Managing Director Danny Lucas' thoughts on his favourites

← Sony Xperia Z1 £599.99

The latest smartphone from Sony allows you to broadcast your favourite moments via Social live, as well as gain information through the innovative Info-eye technology.
www.sony.co.uk



→ Xbox One £429.99

The next generation of console gaming and home entertainment combined in one, the new Xbox allows users to enjoy TV, movies, music and more all at once.
www.xbox.com/en-gb

DANNY'S THOUGHTS:
"I'm not a big gaming fan myself, but my son and his friends have had many years' enjoyment from the Xbox 360, so I assume this one will be good for years to come"



→ Google Glass price TBC

Released this year, this wearable computer responds to voice commands, records everything you see hands free and shares it live with your friends. Welcome to the future.
www.google.co.uk/glass/start

DANNY'S THOUGHTS:
"Can't wait. I will definitely be an early adopter. I think this technology will lead the way, especially in the construction industry where I can one day see my staff building a virtual 3D project to make sure it is 100% perfect before the real thing is built – just like the car industry adopted all those years ago with 3D caves"



← Google Nexus 7 from £199

Thinner, lighter and faster than its bestselling predecessor, the new 7" Nexus combines power and portability to deliver 2.3million pixels in the world's sharpest screen yet.
www.google.com/nexus/7



→ Kindle Fire HDX 8.9" Tablet £329

Weighing just 374g, this new breakthrough ultra light multimedia experience boasts unsurpassed pixel density, front and rear HD cameras and revolutionary on-design tech support.
www.amazon.co.uk





↗ BMW i3
£30,625

Designed for city driving, this eco friendly model is the car of tomorrow, with a unique, emission free electric motor guaranteeing a smooth ride wherever you are.
www.bmw.co.uk

DANNY'S THOUGHTS:
"A brave move by BMW and hats off to them for their commitment. A very good looking and well finished car, but with electric still being a fairly new thing here, I think they will struggle to sell at this price level as they will be compared to the cheaper micro vehicles"



→ Samsung Galaxy Gear
£282

Providing seamless communication between your smartwatch and smartphone, this cutting edge timepiece's S Voice technology responds to spoken commands and captures treasured moments through snapshot memos.
www.samsung.com/uk

DANNY'S THOUGHTS:
"Tempting because it's different!"



↖ Nikon D610 Digital SLR Camera
£1,799.99

Delivering outstanding levels of tonal range, this lightweight 24.3 megapixel camera contains a high speed, high performance EXPEED processing engine that produces spectacular colour and detail.
www.nikon.co.uk

DANNY'S THOUGHTS:
"I have always been a keen photographer and I love a good SLR camera. I'm sure the Nikon is a great bit of kit, but as I am a Canon man, I'm afraid I can't be swayed"



← iPad Air
from £399

Apple's latest tablet is its lightest and thinnest yet – just 1lb in weight and 7.5mm thick. Its A7 chip supports 64-bit architecture with advanced wireless capabilities and iOS 7.
www.apple.com/ipad-air

DANNY'S THOUGHTS:
"An ongoing refinement and improvement of an already great device. Apple really do know their 'why'"

→ LG 55" OLED Cinema 3D Smart TV
£7,999

This state-of-the-art smart TV provides an immersive viewing experience like no other with the first curved design and an eye-catching crystal stand.
www.lg.com/uk

DANNY'S THOUGHTS:
"A fantastic product and great relation to its bigger 84" brother"





CROSSING BOUNDARIES

Whether it's education, retail or urban regeneration, our services apply to a vast array of public and private sectors. From iconic buildings to luxury residential apartments, we take you through just a few examples of the versatility, flexibility and vibrancy that can be seen in our work to date

INFRASTRUCTURE

With many of our projects having been based in and around London, we have been responsible for the decoration and fit out of a number of the capital's infrastructure developments, as well as places in Birmingham and throughout the South East.

Establishing a history of close co-operation with utility and transport terminal operators, we make a point of meeting the strictest deadlines for completion, whether it's a new build or a refurbishment. Our experience covers gas, water and electric facilities, on top of the

needs of railway and underground stations, airports and port and ferry terminals.

From a wide experience of both industrial and commercial contracts, we have tailored a service in the preparation and protection of steel structures to meet the needs of the rail industry. The service is offered with



full technical advice and assistance and includes complete surface preparation and the application of protective coatings. All work is carried out in line with railway requirements, particularly in respect of minimal track possession time. The service was exploited to the full in the restoration of Brighton Railway Station, a three-year project aimed at bringing this Grade II listed station back to its former glory of the 1840s.

Sir Robert M^cAlpine were also chosen as one of the main contractors to build the now famous North Greenwich Station, as well as various support buildings and shaft projects in and around the local areas, spanning from Bermondsey to Canning Town. As a longstanding subcontractor to Sir Robert M^cAlpine, we were awarded the painting and specialist coatings package for the entire project, which at the time was



Infrastructure is of great importance to us and we are immensely proud to be able to contribute to some of the true feats of civil engineering in the UK



known as 'JLE Contract 110'.

Perhaps one of our biggest and most rewarding developments to date was Heathrow Airport's Terminal 5. As one of Europe's largest and most complex developments, the terminal comprises 16 major projects and over 147 subprojects. Pushing the boundaries of traditional construction, it harnesses innovation and best practice from other industries and translates them into mainstream construction management.

We were also contracted by Mace to carry out the £8million internal coatings package on the main terminal building. This included specialist floor coatings to the 18km baggage handling conveyer hall (the longest in the world), plus protective coating to the roof structure and general decorations to all front of house and back of house areas. We didn't stop there, as we likewise oversaw the fireproof coating of the structural steelwork and the installation of specialist systems that were applied to all air intake tunnels.

Following the success of the Emirates Air Line, the UK's first urban cable car system

that crosses the Thames in East London (see p.28), we are currently carrying out extension works to the control room. This consists of an isoclad exterior on lightweight steel framing with full interior fit out, and we are providing the full design and build service for this project.

Infrastructure is of great importance to us and we are immensely proud to be able to contribute to some of the true feats of civil engineering in the UK. Be it an airport, a railway station or the London underground, these are the projects that have made a considerable difference to people's lives and it's certainly rewarding to know that we are part of British history in the making.





Resin Development

- Pumadur, Pumaflor and Pumathane Specialist Resin Flooring Systems
- Sealants and Coatings
- Self-levelling Flow Applications
- Heavy Duty Screeds
- Decorative Quartz & Terrazzo Systems
- Car Park Decking
- Wall Renders & Coving
- Ancillary & Maintenance Products



www.resdev.co.uk

RESDEV LTD, Pumaflor House, Ainleys Industrial Estate Elland,
West Yorkshire, HX5 9JP Tel: 01422 379131 Fax: 01422 370943

Email: info@resdev.co.uk

COMMERCIAL

Over the years we have gained a wealth of experience in the commercial sector by providing decoration packages to major office developments, from low rise construction to high rise landmark buildings throughout London. During this time, we have acquired special skill sets that have taken our project management and delivery to new levels. The work has ranged from data halls to high end office space and included notable clients such as banks and major international financial institutions. Due to working with severe access restrictions, we base our Contracts Managers on site and our dedicated logistics operations frequently supply protection for sensitive and highly valuable equipment.

We completed the fit out of two new large

data centre buildings in the East Midlands for principal contractor Mace on behalf of a leading financial institution. The full programme of our work included erecting drywalls, suspended ceilings and complete toilet and shower fit outs, as well as the installation of glazed security windows, metal handrails and corner guards.

For The Shard in London, we completed a £2million 'shell and core' decorations package during the early phase of construction.

Mace contracted us to do the painting and decorating of all basement and core back of house areas, which we completed for the Sellar Property Group. We were responsible for corridors, perimeter walls and columns, staircases and lift lobbies, not to mention base painting certain public areas.

In the case of the Olympia Conference

and Exhibition Centre in West Kensington, a sensitive heritage restoration was called for on the venue's grand main entrance canopy. Since the site is listed for its historical significance, we worked closely with English Heritage, who approved our cleaning and repairing of the canopy before applying a specially sourced water based paint with a copper metallic finish.

Prior to this we worked on two other projects at the prestigious venue, namely the redecoration of the Grand Hall and the decoration of the West Hall. The former earned us a 'highly commended' accolade from the Painting and Decorating Association in their Premier Trophy Awards, while the latter was rebuilt and extended by Sir Robert M^cAlpine as part of a series of refurbishment works.



This acclaimed building now stands alongside similar heritage sites in our back catalogue, including The Savoy, Café Royal and Brighton Railway Station.

More recently we completed a major toilet and washroom fit out programme for a new, stylish and high quality office complex in the heart of London. Sir Robert M^cAlpine contracted us for the 10 Finsbury Square development, a 150,000 sq ft, nine-storey office building located on the west side of the area and adjacent to the grounds of the Honourable Artillery Company.

Every floor of the southern and northern ends of the new building was fitted out with new toilets and washrooms, as well as shower facilities at the basement level. Our duties this time around included building raised floors, installing high quality vanity tops and all the necessary sanitary ware. The cubicles were created using timber wall panelling and aluminium framed timber doors faced in glass, plus we also carried out all the associated plumbing works.

Along with ensuring that our clients' reputations are reflected to an impeccably high standard, our commercial efforts demand that our own brand remains in good standing in the public sector.





ARMOURCOAT®

SURFACE FINISHES



Sculptural™ is a range of seamless, sculptural wall surface designs from Armourcoat.

www.armourcoat.com

RESIDENTIAL

From private stately homes and mansions to lavish country manor houses, our approach to the residential sector is every bit as professional and attentive as the larger commercial projects that we work on. Refurbishment and decoration in private estates and homes for the elderly is not uncommon, with our detailed management and fine craftsmanship putting the comfort and needs of residents first.

Park House in London was one such example. Located on the corner of North Row and Oxford Street in Mayfair, this high end development combines the best of the city's Georgian history with the hustle and bustle of its busiest and most renowned high street. Including over 49,212 sq ft of office space and more than 26,246 sq ft of retail facilities, the mixed use building also features 16,404 sq ft of stunning residential apartments, complete with an entrance for residents on Park Street.

The building's architects, Robin Partington, gave us detailed surface treatment



specifications, which meant we had to apply a high performance floor treatment to all the basement plant room areas. In order to ensure the highest durability and safety standards, we developed bespoke sustainable coating from our Muralplast range.

This included a low VOC (Volatile Organic Compound) rating to meet the architects' standards of sustainability, slip resistance and health and safety requirements.

Further fit out treatment was carried out at a total of six luxury residences at 280 High Holborn, also in London. The five apartments and a two-storey penthouse were part of a mixed use scheme by real estate firm, Hines UK. New walls and ceilings were fitted by our team, along with oak flooring, high specification kitchens and the latest open style wet rooms in the apartments.

Other decorative works consisted of the spray-applied satin finishes and an Armourcoat feature wall in the lobby of the residential building.

Additionally, our team was commissioned to fit out and completely refurbish a two apartment Georgian building in the heart of Mayfair. The 12-week programme included the installation of new kitchens and bathrooms and new tiling, in addition to plumbing and heating systems, sound proofing and complete internal redecorations.



located on the south bank of the River Thames, next to Tower Bridge and opposite the Tower of London.

We have teamed up once more with Mace and are in charge of decorating all of the apartments in this exquisite accommodation, which takes in some of the best views of the city. It's also walking distance from a great number of the capital's highlights, including theatres, markets, museums and seemingly endless shopping opportunities. The buildings



The project specifications required the top apartment to retain its period style with the realignment of historic mouldings and some replacement with new mouldings fabricated to match. A contemporary style was specified for the ground floor apartment to allow for release onto the lettings market on completion. The development was carried out to the complete satisfaction of the client and two very different styles of apartment were created within the original building.

Among our latest achievements is London's high-status One Tower Bridge development. The Berkeley Homes residence boasts 400 five star apartments and luxury penthouses,

are being designed by Squire & Partners, with a budget of £300,000 and an estimated finishing time of April 2014. Many of the apartments boast balconies or terraces, that are ideal for taking in the skyline view, along with first-rate service and a private courtyard garden.

The residential sector has afforded us the opportunity to demonstrate our skills and services on projects that span a multitude of scales and sizes. Demonstrating our flexibility and diversity, the variation of these works means that, when it comes to our fit out and finishing services, intricate detail and grand visions go hand in hand.

THE MATERIAL WORLD

When we're embarking on a new fit out or finishing project, we need the best components the industry has to offer. From bespoke joinery to cutting edge stencilling and 3D design, we hear from some of our key suppliers about how their products ensure our work looks tiptop every time



Dulux
Andrew Cleaver
Regional Development
Manager and Contractor
Specifier, South East

Tell us about Dulux

I'm tempted to say Dulux needs no introduction. It's a world-famous brand of course, and Dulux Trade is the UK's leading paints and woodcare range, aimed at contractors such as Lucas, as well as decorating professionals. We are all part of AkzoNobel, the world's largest paints and coatings company, which operates in over 80 countries and employs more than 55,000 people.

How did your relationship with Lucas begin?

We first started working together around 1988 when both companies were very different. There has always been much more to the relationship than simply supplying paints – technical expertise and colour matching are integral parts of our service to Lucas.

Which of their projects have you worked on?

Too many to mention! But one or two landmark projects stand out – literally so in the case of The Shard, which is now Europe's tallest building. The London Olympic stadium deserves a mention as well, and we played our part in getting Lucas into pole position for the amazing McLaren Production Centre project.

As an official partner of Lucas, how has your relationship developed?

The fact that Lucas is part of our Contract Partnership network speaks volumes; they're much more than just a long-standing customer. Dulux Trade Contract Partnership is the only scheme in the industry to give architects and builders a choice of continually assessed and approved painting contractors, assuring them

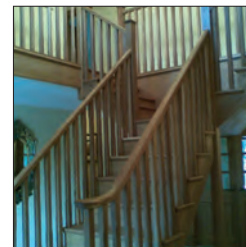
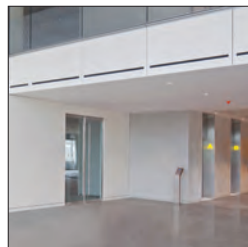
of quality workmanship, professionalism and value for money at every stage – we only recommend the very best.

What does the future hold for this partnership?

More iconic projects, for sure. We're working together on proposals as we speak, but Danny Lucas wouldn't thank me for naming names at this stage. Let's just say here's to the next 25 years.

Dulux Customer Care Centre
ICI Paints
Wexham Road
Slough
SL2 5DS
08444 817 817
www.dulux.co.uk





MCM Joinery

Nathan Ruggles and Tony Chase Office Team

What's the background of your company?

MCM is a family run business, established around 20 years ago to provide bespoke joinery to the trade. Some of our staff have been with us since the company was formed and each has around 30 years' experience in the industry.

How did you first team up with Lucas?

We tendered a large contract for Legal & General and the relationship has grown from there, with Lucas requesting our services on numerous projects since. We now provide them with their specialist joinery needs, whatever they may be.

Which of their projects have you worked on?

We have been involved with some of Lucas' large projects recently; from Monument Place,

McLaren, Chiswick Park and Café Royal to Park House, Fox West, 280 High Holborn, The Savoy Hotel and Metro Bank, which are all prestigious establishments located across the country.

What sets you apart from other joinery companies?

We are unique in being able to offer bespoke joinery to suit the needs of any customer, no matter how small or large the project. Our team continues to provide a first-rate service in a timely, professional and courteous manner. We have extensively invested in the latest machinery, allowing us to provide our clients with a wide range of services and products tailored to meet their individual needs. We also remain competitive in what is a very challenging market for both price and programme. CNC (Computer Numerical Control) machining, veneering and laminating

make us competitive and efficient. We can provide impeccable references from our customers for the many projects we have been involved in.

What kind of future awaits your business?

A very bright one. Since moving to our new premises and acquiring extra machinery, we have been able to become more versatile and therefore broaden the services we can offer to our very extensive clientele.

MCM Joinery Ltd
13-14 Robert Way
Heron Trading Estate
Wickford
Essex
SS11 8DD
01268 764 040



Laser Cutting Services

Sarah Gleave
Managing Director

What's the background of your company?

I started the business in 1987 and pioneered a new technique in stencilling/3D design, ultimately leading to an investment in the machinery to service a gap in the market. In the 20-plus years I have been running the company, I continue to be excited by fresh challenges. I've also valued spending time developing my team into the dynamic, creative, resourceful and, most obviously, enthusiastic unit it is.

How did you get involved with Lucas?

We were approached to provide multi extra-large stencils for a joint project assigned by The Olympic Delivery Authority. This is now recognised as a lasting legacy of the London Games. The best example of the service we provided is in Danny Lucas' own words: "We have been extremely lucky to meet such a helpful company. Without their proactive and attentive service, this project could not have happened. Laser Cutting Services is a remarkably attentive and qualitative partner, making our collaboration a very pleasant journey!"

Which of their projects have you been a part of?

The Olympic project entailed providing over 500 stencils for the Angel Lane Walkway Bridge. The new walkway is over 100 metres long and was part of the transport network improvement for vehicles, cyclists and pedestrians, connecting The Stratford Centre, East London to the 2012 Olympic Park. Lucas approached us last year to complete the 'other side' of this walkway. Again, this involved hundreds of stencils and a great deal of expertise/project liaison.

How do your services benefit the construction industry?

Particular areas of technical skill and ability include designing/producing stencils for extra large projects and laser cutting unusual fabrics. We rise to a challenge and enjoy problem solving. We have worked on various fit out and construction projects, from office logo branding and décor to an entire gable end stencil, as well as a luxury yacht refurbishment and the new Airbus interior. Regardless of shape, size

or quantity, our extensive knowledge and many years of creative and technical expertise in laser cutting ensures a unique product and service that is second to none.

What does the future hold for your company?

The laser cutting business continues to develop and expand into new areas of expertise. We are looking to embrace further projects and welcome approaches from major sporting/commemorative events. We are working on promoting the profile of the company, stressing our ability to work with niche market clients. Our aim is to succeed through our 'can-do attitude', while continuing to enjoy the varied challenges we revel in.

Laser Cutting Services Ltd
Flanders Moss
Station Road
Buchlyvie
Stirling
FK8 3NY
01360 850 389
www.lasercutit.co.uk



Decra
David Pursglove
Sales Director

Tell us about the background of Decra

For over 60 years we have supplied high quality laminated panel products, including reception desks, toilet cubicles, vanity units and wall panelling to airports and other buildings. We supplied the toilet cubicles to the Olympic Stadium and the washroom fit out to the associated Westfield shopping mall in Stratford. We also provide lockers, benches, units and worktops fabricated in Corian, for whom we are a Quality Assured fabricator.

How did you meet Lucas?

They approached us to see if we could offer a fast turnaround on a high value and technically complex washroom quotation, which we did. We provide design, supply and installation of washroom interiors.

Which of their projects have you worked on?

We were responsible for the glass-faced cubicles in the Finsbury Square development and the laminated cubicles and lockers on Project Fox. Currently we are working on a project for BskyB, installing cubicles and glass-faced ducts. Working with Lucas Fit Out is like a breath of fresh air. They are proactive in looking at a job in great detail, identifying where problems may occur and addressing them at an early stage, so solutions can be found that do not compromise quality of finish or programme.

What's your 'USP'?

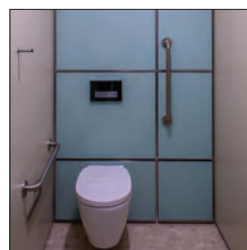
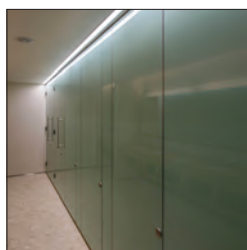
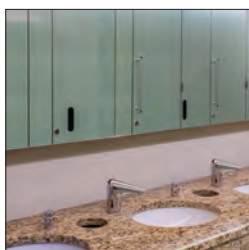
'We Care' – we have a flexible approach to configuring our products to exactly meet a client's needs. We produce high-end

products or 'contemporary cubicles for stylish washrooms'.

What does the future hold for Decra?

A wider range of more innovative washroom products, increasingly targeted to high-end markets, as well as further development of fabrication elements – reception and special purpose desks, Corian units and interior wall panelling, incorporating digital graphics.

Decra Ltd
34 Forest Business Park
Argall Avenue Road
London
E10 7FB
020 8520 4371
www.decracubicles.co.uk



Meet the Team



Fran Davies
Product Designer

What can you tell us about your background?

From a very young age art and design has been a big part of who I am and something I always knew I wanted to do. It was a great way to express myself and my struggles with dyslexia. At the age of six I was selected to have a piece of artwork go on display in the Tate Gallery for the 'John Sargent' exhibition and at the age of 17 a piece of my artwork went up in the SW1 Art Gallery in London. I successfully secured a place at Northumbria University, studying Design for Industry, from which I recently graduated with a 2.1 BA Hons degree. As well as design, I have also completed my Gold Duke of Edinburgh and my first half marathon last year, raising money for the Stroke Association, a charity that is close to my heart.

And your role at Lucas?

My position involves a lot of design work for the new upcoming product, Pro Tools. As well as covering all areas of design for this project, I also help out with any other design requirements for Lucas such as client gifts, 3D modelling and vinyl graphics. Since being with the company I have attended an Auto CAD [Computer Aided Design] course, which allows me to create drawings for projects, as well as amend and edit drawings.

What's your fondest memory about working there?

It has to be when I was privileged enough to be taken to the McLaren Technology Centre and Foster + Partners in the same day; being able to see the design from two amazing companies was such an inspiration. A week later I was lucky enough to take part

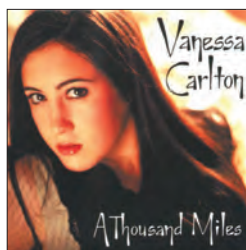
in the opening ceremony for the Olympics, something that may never happen again in the UK in my lifetime.

What do you do when you're not working?

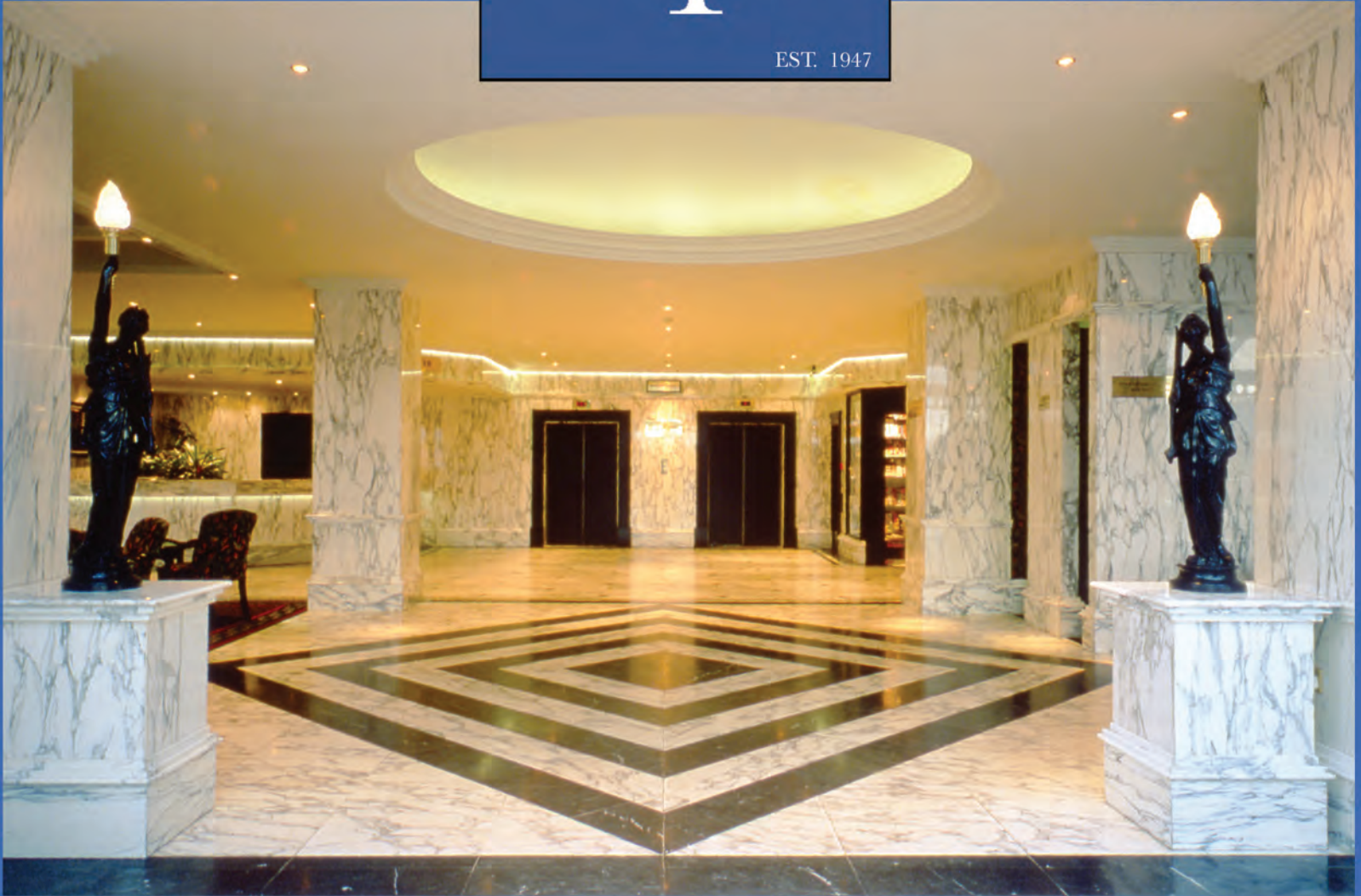
My creativity and design doesn't stop. I have a great passion for photography and enjoy experimenting with film and digital photography. I always make sure to keep in touch and up to date with friends and family. On top of all of this, I also spend a few hours on a Sunday helping out at the local children's charity shop in Maidstone.

What's your favourite song of all time?

It has to be *A Thousand Miles* by Vanessa Carlton. It's such a jolly song that just picks me up and makes my day (and it was the first CD I ever owned).



Meet another member of our team on p.59



Marble - Granite - Slate - Limestone - Onyx - Quartz - Semi Precious - Quartz Composite - Porcelain

Specialist stone supplier for commercial projects

We are dedicated to providing high quality stone products with a personalised service. We supply materials suitable for internal and external projects and have a high-tech manufacturing facility to produce bespoke pieces. Our viewing warehouse holds over 500 slabs of stock and we support this with our global network of buyers ready to source, select and deliver to your specification

TILES | SLABS | CLADDING | TREADS | VANITY UNITS | BARS | RECEPTION DESKS | TABLE TOPS | MEMORIALS

Email: mark.thomas@thethomasgroup.co.uk



THE THOMAS GROUP (Marble & Granite)Ltd.

38 Higher Road, Urmston Manchester, M41 9AP Website : www.thethomasgroup.co.uk

supagold Ltd

CARPET & FLOORING CONTRACTORS ■■■



Established for 30 years, and one of the leading flooring contractors for London and the South East.
Supagold specialise in the supply and installation of broadloom carpet, carpet tiles, rugs, vinyl, linoleum, rubber, luxury vinyl tiles and wood.

Unit 9, Northgate Industrial Park
Collier Row Road, Romford, ESSEX RM5 2BG
020 8597 8800 | 07950 561889
www.supagoldcarpets.com



FIRWOOD

For over 85 years Firwood have been producing specialist paints for industrial commercial and domestic applications

The extensive range of Firwood Products includes:

- Floor paints - including water borne and solvent free with indoor air quality and fire resistance approvals
- Anti slip coatings for shopping malls and sports stadiums
- Solvent free scrub resistant emulsion paints
- Commercial quality wood floor coatings including clear and pigmented systems

Firwood products are used on major projects around the UK. We offer competitive prices, proven performance and compliance with UK and EC legislation.

Specify Firwood products on your next project.

Firwood Paints Ltd - Oakenbottom Road - Bolton BL2 6DP UK
Tel 01204 525231 Fax 01204 362522 E sales@firwood.co.uk
www.firwood.co.uk



Meet the Team



Yan George
Contracts Manager

Fill us in on your background

I've been working for Lucas for over 10 years now. I've seen the business grow and establish itself as one of the leading companies in the industry. I'm proud to have been part of the process and to still be able to contribute.

How about your day to day role?

My position at Lucas is Contracts Manager. I manage the delivery of the projects – budgets, health and safety, on time completion and quality of the work, as well as the day-to-day progress and relations with other contractors and clients. Some of the projects I have managed in the last couple of years are The Shard, the Olympic stadium, Café Royal and The Place.

What future projects would you like to see Lucas involved with?

Perhaps another Olympic Stadium, a Shard kind of a project or more challenging heritage sites.

What do you do when you're not working?

I spend time with my three-year-old son and family and enjoy dining out with friends.

Other than your role at Lucas, what other profession would you like to attempt?

Perhaps being a DJ – I used to play a little a few years ago.



Meet another member of our team on p.87

THE COMPANY WE KEEP

The range of clients we collaborate with says a lot about the versatility of our work here at Lucas. From Formula 1 legends to internationally acclaimed construction companies, we hear from some of the people who have received the Lucas treatment over the years





Need for Speed - McLaren Group

As any Formula 1 fan knows, a good race is every bit about the journey as it is about the finish. Our own journey with McLaren has been one that has broadened our horizons as a company, adopting new methods and techniques that have enhanced our own innovation.

Founded in 1963 and currently led by Executive Chairman Ron Dennis, the McLaren Group entered its first F1 race in 1966, winning its first Grand Prix at the famous Spa-Francorchamps circuit in Belgium two years later. Over 50 years on, the Group remains a leader on the professional racing circuit, having seen the likes of Ayrton Senna, James Hunt, Lewis Hamilton and Jenson Button behind the wheels of their cars.

In addition to the glitz and glamour seen on the track, McLaren have

also taken steps towards supplying premium quality sports cars to discerning buyers through their state-of-the-art McLaren Production Centre (MPC) near Woking, Surrey. Lighter and faster, as well as more powerful, fuel efficient and exclusive than the key competition, the McLaren range embodies everything the company stands for and something that we both have in common; an unquenchable appetite to be the best in the business.

“The core ingredient that covers those companies who work with us is that they have to have the same ethos, the same desire to do things really well and the same objective to be able to look back on a completed piece of work and have a sense of pride,” says Ron. “And that of course extends to how the building is painted; in that area we have a great

partner in Lucas.”

Designed by renowned architects, Foster + Partners, the Group’s Production Centre was built alongside the existing McLaren Technology Centre, enabling them to fulfil global demand for their impressive range of vehicles. Having been brought on board to complete a number of surface treatments, in 2011 we successfully concluded the project within a short timeframe and to the impeccable standards expected from McLaren.

“They were brought in to do a particularly challenging task, which was a refurbishment of some of our more complex manufacturing equipment,” explains Ron. “I was just blown away by the precision and skill that these people were bringing to

what was a very challenging task. The relationship started there and now they are our chosen applier of surface finishes.”

The work we carried out led to a significant landmark in our own company’s history as we were made an official partner of the Group, who are rapidly expanding into other areas of technological advancement with their Applied Technologies division. In addition to our surface treatments and fit out projects, we now benefit from a wealth of knowledge and experience shared with McLaren; adopting and applying techniques that are relevant to our industry, we can ensure that we are at the forefront of what we do, going from pole position to first at the finish line every single time.

MCLAREN GROUP ■ CHERTSEY ROAD ■ WOKING ■ SURREY ■ GU21 4YH
01483 261 000 ■ WWW.MCLAREN.COM



Standing the Test of Time - Sir Robert M^cAlpine

For our contribution to the London 2012 Olympics, we teamed up with a company that is over 140 years in the making. Established in 1869, Sir Robert M^cAlpine Limited is among the UK's leading names in the building and civil engineering sector. Having worked on projects as noteworthy as the O2 Arena and the Dorchester Hotel, this family-owned business has accumulated a wealth of experience over the years with a variety of clients across all the major market sectors and industries.

From their first project to their present day contracts, the team at Sir Robert M^cAlpine have maintained a reputation for holding true to their founders' commitment to service and quality.

In addition to this history of innovation, their work has adapted

to meet contemporary standards on a number of awe-inspiring projects. Among our many notable collaborations with them was one of their most impressive and eagerly anticipated endeavours to date – the London 2012 Olympic Stadium.

Constructed on a 40-acre site to the southern side of the Olympic Park in Stratford, the centrepiece of the world's greatest sporting event was assigned by the Olympic Delivery Authority, completed under budget and two months ahead of schedule.

Responsible for the design and construction of the stadium, Director of Operations Tony Aikenhead and his team got to work based on a brief from the Olympic Delivery Authority. Working closely with architects Populous, we completed a number of fitting and decorating applications throughout the stadium, including

the 700 rooms that made up the west stand, which accommodated athletes, venue management, VIPs and media.

"From Lucas' painting and decorating company through to their fit out capability, the quality that we were after was delivered by Danny and his team," says Tony.

We have also worked together on the Millennium Dome, where we were responsible for road markings to car parks, all structural steelwork in protective coating and fire protection to the underside of all the main arena seating. The project cost £400,000 to complete and also involved general emulsion work to wall areas and steelwork painting to

staircases and ramps.

Going even further back, we were contracted by the group to work on the now famous North Greenwich Station. The £1million project got underway for London Underground in the mid 1990s. We were awarded the specialist coatings package for the entire development, which also included various support buildings and shaft projects in and around the local areas, spanning from Bermondsey to Canning Town.

Perhaps even more rewarding than the projects themselves is the fact that we are aiding this established company by contributing to an enduring legacy that has already stood the test of time.

SIR ROBERT M^cALPINE LTD ■ EATON COURT ■ MAYLANDS AVENUE
HEMEL HEMPSTEAD ■ HERTFORDSHIRE ■ HP2 7TR
01442 233 444 ■ WWW.SIR-ROBERT-MCALPINE.COM







Partnering Up - Mace Group

In business, you tend to know when you're onto a good thing. Since the mid 90s, our relationship with Mace Group has been one that we have watched flourish and develop to encompass a number of exciting projects, including The Shard, The Savoy Hotel and Café Royal.

As an internationally renowned consultancy and construction company, Mace have been offering integrated services in commercial, retail, sport, leisure and residential sectors since 1990. Originally led by Ian McPherson, who left Bovis Homes with a handpicked group of construction and architecture professionals, they aimed to bring some more collaborative ways of working into the traditionally combative construction industry. Now spearheaded by Executive

Chairman Stephen Pyecroft and Mark Reynolds CEO, they have made their reputation on working with the very best in the industry time and time again.

"We like to have people that align with the Mace vision; customer satisfaction, giving confidence in terms of delivery, providing the right quality of staff and delivering a quality service to clients that is unquestionably the best that they can get," says Stephen. "That's why I think Danny and the team have survived in Mace, because we see them as one of the premier players that have actually delivered what they say they're going to do and stand up and be counted when needed."

Defined in no small part by 'the Mace way', Stephen and his team incorporate a simple but effective mantra into everything

they do – to find 'a better way' for their clients. With a range of ISO accreditations and more than 65 offices worldwide, it isn't difficult to appreciate the calibre with which they approach each and every project they are a part of. Following our first collaboration with the company we quickly established an effective relationship, where core values were shared and a great degree of trust was instilled.

"In all things, delivering to time is essential, but more and more now, it's about delivering to time and to quality, because time passes, but quality is always there," says Pyecroft. "We're pleased to say that one of the key criteria of Danny and the team is that they deliver

a quality product at the end of the day. Whether it's The Shard, the Olympics or Terminal 5, we tend to call and make sure that Lucas is there because they deliver time and time again to a standard that cannot be beaten in the industry."

From there, we at Lucas have become a key partner of the group, aligning ourselves alongside this £1.3billion industry standard organisation. With a rich and rewarding history already built up, there's no telling how far we will go and what exciting projects we will collaborate on in the future. One thing that is certain, however, is the continuation of a relationship that will hopefully remain strong for many years to come.

MACE GROUP LTD ■ 155 MOORGATE ■ LONDON ■ EC2M 6XB
020 3522 3000 ■ WWW.MACEGROUP.COM

*We
have built
a reputation for
pioneering new and
innovative methods in
painting technology
and spray application
techniques*





LUCAS: LUCAS ULTIMATELY CARES ABOUT SAFETY

SAFETY AND GREEN CREDENTIALS

In this modern age of health and safety regulations, there is nothing more important than looking out for the wellbeing of both the environment and your workforce. We guide you through some of our standards and practices and shed some light on the importance of safety awareness and going green

When you work in the construction industry, environmental and safety concerns are taken seriously. That's why we at Lucas have established and maintained a reputation for adhering to the strictest and most disciplined procedures available. As a cornerstone of everything we do, safety and environmental practices are among the highest priorities.

Our safety processes are unparalleled and we have obtained a number of awards and accolades over the years. We were recognised for three years running for having no reportable accidents or incidents while decorating Terminal 5 of Heathrow airport during its construction, a project for which we deployed our largest team to date.

What's more, the safety measures we take throughout the company are independently checked and accredited by the UK Contractors Group Achilles' 'BuildingConfidence' scheme and the more specialist 'Link-Up' programme, which was originally adopted for the railway industry. With every project being considered and planned in detail before they even begin, this allows us to assess risks thoroughly, so that when the work does commence, the likelihood of any accidents occurring on site is considerably reduced.

These policies stretch throughout Lucas and can be seen in every department and level of staff. Notably, all of our site management team are required to hold SMSTS safety training. Our Safety and Quality

Manager, Rod McInnery, ensures that safety audits and random site inspections are carried out, logging our AFRs (accident frequency rates) across the group. Moreover, a master training matrix is managed for all staff, as well as an individual training matrix for every project.

Elsewhere, other members of our team are provided with the necessary training and knowledge to oversee and operate in a safe working environment. Safety harness training is provided, with all harnesses frequently checked and logged at regular intervals. The Government-backed CITB (Construction Industry Training Board) 'Construction Skills' initiative is also something we take part in, helping to continually progress our staff by implementing improved training



↑ **Safety and Quality
Manager, Rod McInnery**



and development plans each year.

Operating a 100% CSCS (Construction Skills Certification Scheme) card policy across the workforce, our Working at Height strategy is a minimum requirement and ensures that all members of staff are suitably trained in safety courses provided by IPAF (International Powered Access Federation) and PASMA (Prefabricated Access Suppliers' and Manufacturers' Association). All of our power tools and spray equipment, meanwhile, are logged and PAT (Portable Appliance Testing) certified.

On the environmental front, we have been awarded our ISO 140001 certificate, following the development of detailed and effective environmental management systems. Rigorously and regularly appraised by external assessors, this accolade is the internationally accepted industry standard that we continue to uphold by reviewing and updating all of our policies and practices. As a

blueprint for developing an effective environmental management system, our procedures are put to the test, managers challenged, waste policies examined and site practices reviewed to ensure that the highest environmental measures are maintained at all times.

In addition to the standards met and adhered to at Lucas, we have also built a reputation for pioneering new and innovative methods in painting technology and spray application techniques. To that end, we have been at the forefront of the move towards using water based paints, changing our clients' perception of them and thereby encouraging a more environmentally friendly approach to our finishing services. Adopting this trend long before the introduction of the European Union directive regarding the use of low VOC (Volatile Organic Compound) paint products, we have since seen this policy adopted by all major industry clients, including architects,

designers and specifiers.

Lucas HQ has seen a major renovation and makeover in accordance with our standards and procedures. From our purpose-built logistics centre, which aims to improve transport efficiencies and cut environmental impacts, to the development of our roller and brush washout stations, we have gone above and beyond in adapting each and every facet of our business to work more effectively for the environment.

Safety and environmental issues are of paramount importance at Lucas. Not only do they ensure that we continually record, monitor and improve our conditions so as to complete our work carefully and conscientiously, but they are also another means through which we continuously push the boundaries and break new ground, innovating original solutions and techniques to get the very best out of everything we do.

Our Standards

Here are just a few examples of the safety and environmental standards we have met at Lucas

→ **Quality management system to ISO 9001**
– accredited by BSI (British Standards Institution)

→ **Environmental management system to ISO 14001** – accredited by BSI

→ **Achilles 'BuildingConfidence' accreditation** – we have achieved the maximum 5* status following continuous high performance. 'Building confidence' is highly regarded by our major customers as a measure of competence and performance

→ **Achilles 'Link-Up' accreditation** – this is a requirement for contractors working in the rail industry

→ **FSC® (Forest Stewardship Council®) Chain of Custody accreditation (C110311)** – the FSC promotes sustainable production and use of timber and timber products

→ **FIRAS accreditation**
– FIRAS set standards for the design and construction of buildings with regard to fire safety



DOMUS

[NOW OPEN]

VISIT THE NEW DOMUS WEST ONE SHOWROOM

State-of-the-art design, industry leading materials, expert advice and technical support makes this the ideal space to stimulate the creative mind and specify the perfect solution.



LONDON SHOWROOMS:

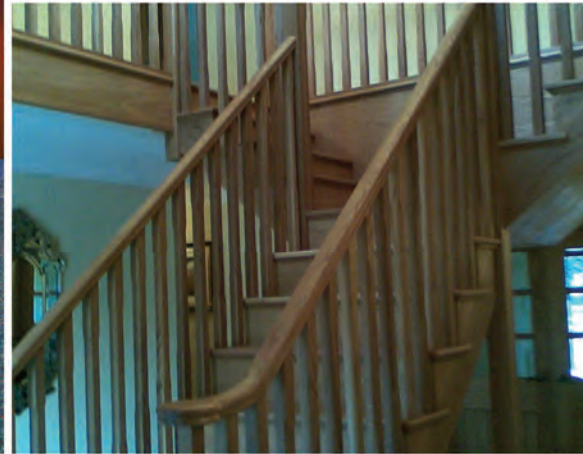
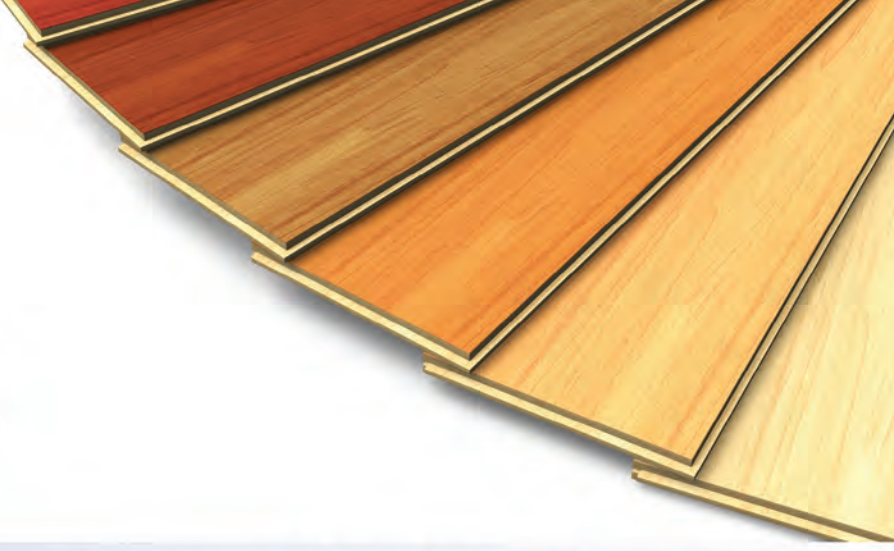
DOMUS WEST ONE
25 EASTCASTLE STREET
LONDON W1W 8DF

DOMUS CLERKENWELL
50 GREAT SUTTON STREET
LONDON EC1V 0DF

DOMUS BATTERSEA
76 QUEENSTOWN ROAD
LONDON SW8 3RY

TEL: 0845 062 5555
WWW.DOMUSTILES.COM





Providing Bespoke Joinery to the Trade for 20 Years

We have invested in the latest machinery allowing us to provide our clients with a wide range of competitive and efficient services and products tailored to meet your individual needs.

CNC machining | Veneering | Post forming | Laminating | Solid Surface Worktops | Polishing

We have been involved with both large and small contracts covering all aspects of joinery and are capable of meeting fast track industry deadlines. Please contact us for a competitive quotation.



» FROM LEFT TO RIGHT

- Farhan Irshad**
Assistant Commercial Manager
- Tom Taylor**
Commercial Manager
- John Evans**
Commercial Manager
- Ken Mulholland**
Commercial Director
- Alex Smith**
Assistant Commercial Manager

COMMERCIAL CORNER

Headed by Ken Mulholland, our commercial team covers the estimating, procurement and commercial management of each project, making sure everything runs as smooth as possible. We'd like you to meet the team that delivers

We work hard tailoring our services specifically to meet the needs of our clients – indeed, our strategy is to be the brand for specialist fit out and finishing. The five members of our commercial team are forward thinking, collegiate and dynamic, constantly updating their industry knowledge. No matter what stage they're at, they are able to learn and develop in their preferred ways.

At Lucas we are particularly good at internal collaboration, teamwork and developing staff. Our commercial team has worked on many award winning developments, proof that they are a key group of people that will always be able to give the right service and advice first time. They work closely with other teams such as project support and accounts, who assist with all specialist aspects of our projects.

The team love what they do and it shows – they are always on hand to help.



FARHAN'S STORY

We introduce you to a key member of our commercial team

At Lucas we support those who show potential and loyalty, attributes that

our Assistant Commercial Manager, Farhan Irshad, possesses in abundance. Farhan came on board in August 2011 as an Assistant Quantity Surveyor. Having previously worked as a security guard at the McLaren Production Centre, he frequently got to talking with Danny Lucas, who would often visit the site during our work there.

“Whilst Danny was going through security procedures I always had a chat with him,” says Farhan. “One day I explained that I was looking for an office based job so that I could use my accounting and computer related skills. He told me that he had a vacancy for some admin and surveying work and arranged an interview with Ken Mulholland [*Commercial Director*]. Ken offered me the job, which I accepted.”

With his background in accounting and IT, Farhan's way with numbers assisted him in becoming part qualified as a quantity surveyor at Lucas. Since then he has gone on to work on a number of our most acclaimed projects, pricing decoration packages for the likes of The Shard, the Emirates Air Line cable car and the One Tower Bridge development.

“My background helps me to understand things quickly and gave me the confidence to be a problem solver,” he continues. “I am very proud to be part of the Lucas team.”



*We were delighted to be a part of the 2012 Olympics
as sub-contractors to S Lucas Group supplying and installing ceramic tiling
in the Restaurant, Kitchen and Public Toilet areas of the Arcelormittal Orbit*



Riverbank House, 67 Summer Road, East Molesey, Surrey, KT8 9LX
Tel: 020 8339 0001 Fax: 020 8339 0002 Email: info@harperandedwards.co.uk
www.harperandedwards.co.uk



Getting the right Air Conditioning system helps you create the perfect environment.

At Blakes, we work hard to understand your cooling, heating and ventilation needs. We supply and install Air Conditioning systems, specifically designed to suit your building. Based in Kent, we are ideally situated for London and the Home Counties. Blakes has been installing and maintaining Air Conditioning, Heating and Ventilation systems for the Commercial, Retail, Educational, Leisure and Domestic markets since 1996.

We are Members of the B&ES and CHAS accredited, so you can rely on us for a professional service. All our Air Conditioning installations come with a full 5 year warranty. So whatever your requirement, be it big or small, we are happy to advise you, so give us a call.

Blakes Air Conditioning Ltd, East Malling Enterprise Centre, New Road, East Malling, Kent ME19 6BJ

Tel: **01732 222255** DDI: **01732 840123** Web: www.blakesaircon.co.uk





Tools of the trade

As the world goes through rapid technological change, we need more than just experience and skill to get the best finish. In anticipation of the Lucas Pro Tools range, launching in September 2014, we speak to MD Danny Lucas about what to expect from this important new leap in our industry

While a vast amount of ability can be found here at Lucas, the tools we use are just as essential to getting the perfect finish as the talent of our team. As part of the Lucas family, Lucas Pro Tools is a brand new range of bespoke equipment unique to the fit out and finishing industry. The brainchild of Danny Lucas, this exciting new venture is the result of years of dedication and passion on his part.

“It’s been something that I’ve searched hard for over many years,” says Danny. “I originally started out as a painter myself 31 years ago, and I’ve always felt that there’s been a need for very top end tools for the trade that have been lacking in our industry.”

With this drive and enthusiasm, Danny set about creating his own brand of

ergonomically designed tools, using not only the very best materials and manufacturing methods, but also the best woods, handles and even bristles that he could get his hands on. Inspired in no small part by the competition he was seeing overseas, Danny was adamant about bringing the UK market up to the same high standards.

“I’ve tended to find the tools I want more on the continent when I’ve gone on holiday to places like Italy and Spain,” he says.

“You generally find that they have unusual but very good quality tools available for the decorating trade in those countries, so I was driven to really think hard about what we wanted in the tools we used as a specialist in construction.”

From there, Danny and his team created



Finishing Like a Pro

We take a sneak peek at what to expect from the Lucas Pro Tools range

→ **The Lucas ProFinish**

A first in eco friendly brush design; highly versatile and packed with innovative features, the ProFinish sets a new benchmark in craftsmanship and performance

→ **Ergonomic Handle**

Sculpted for exceptional comfort and control using the latest 3D modelling technology

→ **Seamless Ferrule Design**

Precision, agility and flexibility at your fingertips

→ **Integral Brush Rest**

Design innovation and practicality that'll transform the way you work

→ **Oval Dupont Bristles**

Scientifically formulated high-tech fibres for enhanced flow and the smoothest finish

→ **ProGuard**

Clean, green brush protection and mobility for the 21st century

COMING SOON

→ **The Lucas ProCut**

With unique ergonomic handle and seamless ferrule design, the ProCut brush has been engineered for superlative precision and control

tools that they wanted to use for research and development. Starting out in 2008 by trialling hybrid versions of materials they knew would work for them, the seeds that were sown gradually sprouted into Lucas Pro Tools, which Danny is now making available to the larger market.

“We want to inspire others to do a very good job, so we thought, ‘Let’s widen this, let’s create a brand and look at launching this technology to the wider audience;’” he says. “With our expertise and the projects we’ve done, we can really offer something to inspire and professionalise a market that hasn’t had much attention paid to it in terms

our official partnership with the McLaren Technology Centre, will encompass a wider range of products made available for the public, tradesmen, designers and architects, to name a few. In short, it will add an entirely new dimension to our business, making our services and products more readily available both within and outside the industry.

“I think it’s strengthened our commitment to innovation and quality in that our clients are seeing something that they’ve never seen from a contractor before,” says Danny. “That has strengthened the Lucas brand and what we stand for, but it’s also enhanced the service and the results that we’ve given

“With our expertise and the projects we’ve done, we can really offer something to inspire and professionalise a market that hasn’t had much attention paid to it in terms of the tools that we use”

of the tools that we use.”

And what tools they are. From the innovative ProCut to the eco friendly ProFinish, Danny was keen to go back to the very start, developing a range of paint brushes that would raise the bar in our industry, while also acting as a reminder of our roots as a business.

“We are starting with painting because that’s where the company was born,” says Danny. “We came from painting, specialist finishes and decorative finishes, so we’ve gone back to basics and looked at addressing the tools for that particular area first.”

But our new range doesn’t stop there. Looking forward, Danny is optimistic about the future of the brand, which, in addition to complementing our appointment as a Dulux Trade Contract Partner, as well as

to the clients because we’re using the very best skilled operatives with the very best tools to get it right first time. It’s adding to something that we already do, but making it even better.”

With seemingly endless possibilities in sight for Lucas Pro Tools, we think we’re onto a pretty good thing here. The extensive research and development already underway has seen us merge the latest in technical and design sensibilities, as we continue to push the boundaries and take the next step forward in the decorative and applied finishing industry. A bad workman might blame his tools, but we’ve got nothing but good things to say about ours.

WWW.LUCASPROTOOLS.COM

TWITTER.COM/LUCASPROTOOLSWW



one media

and creative uk ltd

A FULL SERVICE CONTRACT PUBLISHING AGENCY
WITH ALL KEY PUBLISHING DISCIPLINES IN-HOUSE. WE HAVE
INTEGRATED NEW MEDIA CLOSELY ALLIED TO THE AGENCY,
ENSURING YOUR CUSTOMERS SEE AND HEAR ONE VOICE, YOURS.



PROUD PUBLISHING SUPPLIER TO LUCAS

www.one-media.co





SET IN STONE

When you want to work with the best materials available, sometimes you have to go a little further afield than your own back yard. We travel to Massa and Carrara in Tuscany, Italy to find out where one of our main suppliers, The Thomas Group, gets some of the finest marble on the market

There are some places that you can't help but get swept up by. From Rome to Florence, Venice to Milan, Italy continues to uphold its reputation as one of the most romantic, traditional and captivating countries in the world.

The province of Massa and Carrara in Tuscany is no exception. Located on the Carrione River and named after its two main towns, the region is renowned as the home of the famous Carrara marble. Indeed, the town of Carrara in particular has been the destination for sourcing white marble since the Romans started quarrying the mountains surrounding the area. It has since been used to create the likes of Michelangelo's *David* in Florence, the Pantheon in Rome, the Marble Arch in London and thousands of other iconic structures and monuments worldwide.

"To this day the marble from this region is growing in popularity, with an ever expanding market of clientele from around the world demanding the best the area has to offer," says Mark Thomas, Director of The Thomas Group, from whom we have obtained high quality natural stone for a number of our projects. "The sheer mass of imported stone blocks brought to the area for expert processing makes links to Carrara a must for a



company working in this industry.”

The Thomas Group is certainly no stranger to our industry. As a specialist supplier of natural stone, their products range from high specification, bespoke stone products to a diverse range of marble, granite, limestone and quartz slabs and tiles. They have been committed to sourcing quality materials from around the globe since 1947, bringing some of the most sought-after stone to the UK.

“We are a third generation, family-run company with each generation focused on expanding our reach into all areas of the

market,” explains Mark. “We have been trading in stone for over 65 years and pride ourselves on our strong links with quarries and block producers in the wide variety of countries from which we source product.”

With over 2,000 tonnes of material being shipped from overseas every year, it’s no surprise that the relationships the group has with its suppliers are vital to ensuring the high level of consistency they provide.

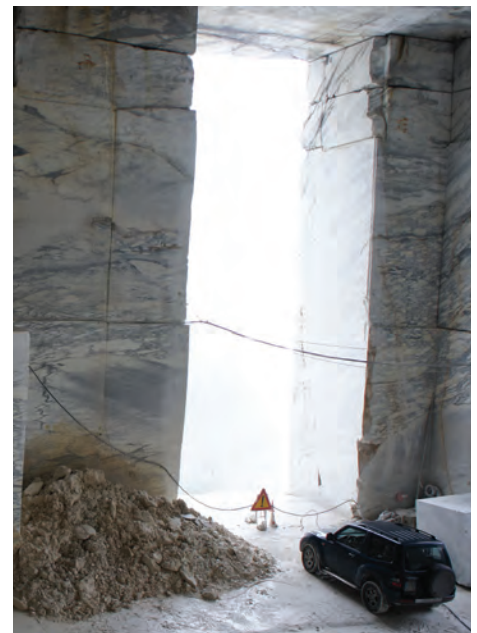
“Dealing in a product that is, by its nature, inherently inconsistent, the emphasis we place on quality has been crucial to our

success,” says Mark.

To that end, The Thomas Group has established strong links with Italy over the years. The marble they obtain ranges from the classic and seemingly timeless Bianco Carrara from the hills overlooking Carrara town, to more dramatic marbles like Arabestco Corchia and Statuary, which are favoured by sculptors and designers alike. These and many other varieties of marble are native to this area and are a testament to the authenticity and dedication the company maintains in its relationship with the region.

“We have an Italian member of staff with 50

“Dealing in a product that is, by its nature, inherently inconsistent, the emphasis we place on quality has been crucial to our success”



years' experience who lives in Carrara and is constantly controlling our quality, using his local knowledge and contacts to secure the right material for our projects," says Mark. "We regularly visit to check on progress with materials and guide clients on specification trips. To be able to control the material from quarry through processing to the final product can be essential to ensure the right finish."

Which is where we come in. The group has worked with us on projects such as Monument Place and the Finsbury Square development in London, going above and beyond the call of duty to ensure only the highest quality materials are used.

"Recently we worked together on a project involving a marble that was particularly difficult to supply, as the type specified was not widely available and extremely varied in colour and vein structure," Mark explains.

"Our first port of call was to highlight these potential issues and put forward a very similar material that may have suited the project and eased the supply whilst reducing costs on the job. It was decided, however, that this option did not suit the project and so we used our relationship with the Italian licence holder of the French material to ensure we got access to the highest quality that was available."

Such dedication to getting the job done to top standards has meant that our relationship with The Thomas Group has become integral to our own success.

"The variety of stone types available on the market and different finishes available to designers make stone an exciting and practical material to use in architecture," Mark explains.

"Our close working relationship with The Lucas Group comes into its own through ease of access to our knowledge base of natural

materials, allowing for clear communication on availability, any potential design issues with specific material and forecast delivery capabilities."

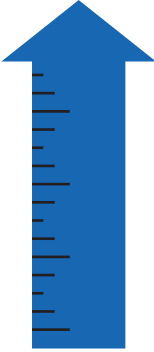






Certainly, the forecast is looking good for our continuing relationship with The Thomas Group. As Mark and his team continue to provide us with perhaps the finest stone in the world, it's certainly encouraging to know that the same materials were once used to create some of the most acclaimed monuments and buildings throughout history. And while many countries have attempted to replicate this precious stone over the centuries, we at Lucas are only satisfied with the original and the best from our friends in *bella Italia*.

THE THOMAS GROUP LTD ■ 38 HIGHER ROAD ■
URMSTON ■ MANCHESTER ■ M41 9AP
0161 748 2146 ■ WWW.THETHOMASGROUP.CO.UK



LUCAS BY NUMBERS

Key facts and figures you might like to know about our company

<p>150,000+ LITRES OF PAINT USED ANNUALLY – ENOUGH TO DECORATE THE SHARD 35 TIMES IN A YEAR!</p> 	 <p>30,000 Paint cans recycled each year</p>	 <p>The average service of a Lucas employee is</p> <p>12 YEARS</p> <p>Paul Jearum, Lucas' Painting Director, is one of our longstanding team members and has been with us for over 26 years</p>
 <p>3 YEARS WITHOUT ANY REPORTABLE SAFETY INCIDENTS AN AWARD WINNING RECORD</p>	 <p>455 KILOMETRES of eco masking tape used each year – enough to span from London to Newcastle!</p>	<p>90% of our work made up from REPEAT order clients</p>
<p>97.2% OF WORK COMPLETED SNAG-FREE</p>	<p>ZERO emissions released from Electric Smart car used by Lucas Project Managers for London Site Visits</p> 	<p>100% OF OUR OPERATIVES ARE CSCS (CONSTRUCTION SKILLS CERTIFICATION SCHEME) CERTIFIED</p> 



DV Fabs Ltd Steel Fabrication

Professional steel fabricators based in Kent for 25 years. Offering a wealth of experience from

- STRUCTURAL / ARCHITECTURAL FABRICATION
- FIRE ESCAPES | LADDERS | WALKWAYS
- RAILINGS | GATES AND MORE.



The best way to get a good, efficient and reliable service for steel fabrication in and around Kent or London is to contact DV Fabs Ltd.

M: 07913 417498 | F: 01474 748301 | E: info@dvfabsltd.co.uk
www.dvfabsltd.co.uk



"Express Courier Network has been providing us with all our same day local and national courier needs since November 2010. We are happy to recommend them."
Katie Lucas

Express Courier Network

National Courier

Ready to pick up from the majority of UK locations within 60 minutes. Offering a quality national service but at a locally appropriate price tailored to individual customers' needs

Our office hours are 07.00 to 19.00, seven days a week.
We will respond to any enquiries within 1 hour

Telephone: 01474 850 903
Email: xcn@btopenworld.com
www.expresscouriernetwork.co.uk



Fast Track

An exhilarating day out was enjoyed by the Lucas team who visited the 2013 Spanish Grand Prix, formally known as the 2013 Formula 1 Gran Premio de España. Held at the Circuit de Catalunya in Barcelona, Spain, the race was the

fifth round of the season, marking the event's 43rd time running as a round of the Formula 1 World Championship, and the 23rd running at Catalunya.

Hosted in the McLaren VIP area, we had full access to the pits and racing debriefs. Alas,

despite our best efforts in eagerly willing McLaren to win, Jenson Button finished fifth, with his teammate, Sergio Perez, finishing sixth and Fernando Alonso taking his 32nd Grand Prix victory.





Tee Off Time

Warmed by occasional autumn sunshine, 40 golfers battled for the Lucas Golf Championship. Held on the East Course of the magnificent East Sussex National Golf Resort &

Spa in Uckfield, East Sussex, the day finished in victory for our very own Construction Director, Frank Gallagher.

The evening saw comedian Stan Boardman

displaying his seemingly endless repertoire of jokes before, during and after a fine three-course meal. With laughter still ringing in our ears, all were winners at the Lucas Golf Day.



The Greatest Show on Earth

Team Lucas, led by Danny Lucas, played a small role in the awe-inspiring opening ceremony of the London 2012 Olympic Games.

The London Organising Committee for the Olympic and Paralympic Games (LOCOG) invited us to put together a 'team' for the ceremony in recognition of the numerous painting packages

we carried out on the Olympic Stadium and other sporting facilities in the Olympic Park.

Along with additional companies that were responsible for the construction and completion of the park, Team Lucas was made up by members of our painting group. Invited guests donned hard hats and provided a spectacular guard of honour

for the Olympic Torch as it entered the stadium before igniting the Olympic cauldron.

Danny Lucas says: "I was tremendously proud to represent the company at the greatest show on earth, watched by hundreds of millions of people around the world. It was quite simply a most amazing experience."



Foundations of Success

We are extremely proud to have won in the Finishing and Fit Out category of the Specialists Awards 2012. Organised by *Construction News*, it stands as one of the most important awards schemes for specialists in the UK building and construction industry.

This is the second time we have taken this important award. We were winners in our first year of entry in 2010 and were shortlisted again in 2011. It is particularly gratifying because these awards are judged by senior, experienced figures in our industry.

The award was presented to Chairman and

Managing Director, Danny Lucas, at a gala dinner held at the Hilton Hotel in London's Park Lane. The dinner was hosted by comedian Simon Evans for 600 leaders in specialist contracting.

Rebecca Evans, Editor of *Construction News*, highlighted the importance of the industry: "Without specialist contractors like you, the industry wouldn't survive. You are the foundations on which it stands and without which it couldn't exist."

We were judged on our industry performance, training programmes and health and safety record, as well as our corporate planning and ambitions for the future. The judges also looked at some of

our recent projects, including the decorations we carried out for the new McLaren Production Centre at Woking, Surrey, and the works we undertook at Westfield Stratford City during construction and the run-up to its opening.

Danny Lucas says: "We're thrilled to have won this award for the second time. It reflects well on the whole company and acknowledges our dedication to quality, reliability, safety and to our environmental considerations."

We were shortlisted for the Specialists Awards 2013 and have been shortlisted for the awards in 2014. Watch this space!



AWARDS CABINET

We have received our fair share of accolades over the years for outstanding effort in a variety of categories. Here are just a few examples that speak volumes about our company

CONSTRUCTION NEWS
Specialist Awards 2010 (Winner)

PAINTING & DECORATING ASSOCIATION
Premier Trophy Awards 2010 (Highly Commended)

CONSTRUCTION NEWS
Specialist Awards 2011 (Finalist)

KENT EXCELLENCE IN BUSINESS AWARDS
(Finalist – Employer of the Year)

CONSTRUCTION NEWS
Specialist Awards 2012 (Winner)

CONSTRUCTION NEWS
Specialist Awards 2013 (Finalist)

YOUR TURN.

THE NEW JAGUAR F-TYPE.

Step into the new Jaguar F-TYPE. Experience everything we've ever learnt about making legendary sports cars. And from £58,520, now it's your turn.

JAGUAR.CO.UK



Take your turn. Download the Blippar app to get inside the F-TYPE.

HOW ALIVE ARE YOU?



Vehicle shown F-TYPE V8 S from £79,985 On The Road. F-TYPE range official fuel consumption figures (tested in accordance with EU legislation) in mpg (l/100km): Urban 17.8-22.4 (15.9-12.6); Extra Urban 34.0-40.9 (8.3-6.9); Combined 25.5-31.4 (11.1-9.0). CO₂ Emissions 259-209 g/km. For comparison purposes only. Real world figures may differ.

Meet the Team



Frank Gallagher
Construction Director

Tell us about your background

I have been working in construction management for over 40 years. The majority of this time has been spent working on construction projects in and around London. Before joining Lucas I worked as Construction Director on the landmark One Hyde Park residential project. I have known Danny Lucas for over 12 years and was delighted to join Lucas as Construction Director five years ago.

What about your role in the company?

I am responsible for production of our tenders and proposals for new work, as well as organising and implementing production of design information for our projects. Once we receive an order, I set out a plan as to what design information we produce, create a design and construction programme and agree and communicate what works are carried out by Lucas directly and what is carried out by our key supply chain. I

manage the process of deliveries to Lucas, plus sorting and protection of materials to be delivered to the sites as scheduled. I also provide back up to our site management in checking off site manufacture for quality and programme, scheduling samples and mock-ups and investigating BIM (Building Information Modelling) requirements.

How has your work with BIM enhanced Lucas as a business?

We have decided to embrace BIM going forward as a company in parallel to our main clients and to lead in this respect rather than follow. This is part of our policy to be cutting edge and continually set new standards. We see 3D design and BIM becoming the norm in the future and because of our preparations and procedures we will be well placed to provide our clients with the service they expect. We have produced our first BIM design and incoming tenders are now

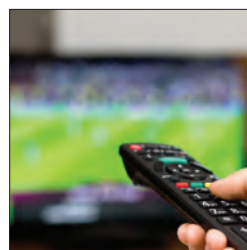
calling for BIM input, which we can respond to positively. We have now produced our BIM company strategy and we believe this will enhance our market position and improve our client service as our expertise increases in this field.

What do you do when you're not working?

My wife and I are keen golfers, so this takes up some of our weekend and holiday time. The rest of my time is spent in the garden, watching sport on TV or having a quick pint at our local in Goudhurst, Kent.

Which Lucas projects are you most proud of?

A couple come to mind as being very satisfying. These were a fast track fit out/ refurbishment in the Savoy Hotel and the fit out of the observation platforms in the Olympic Park's Arcelor Mittal Tower.



Meet another member of our team on p.88

Meet the Team



Stanislav Kamburov
Site Foreman

What's your background?

I'm from a small town in Bulgaria called Sliven and I have been living in the UK for nearly 13 years. I originally worked on a farm in Selling, Kent for about six months before moving to London where I still live today.

And your role at Lucas?

I'm a site foreman, so my duty is to make sure the quality of our work remains high. I manage the workforce in the most effective way possible so that we can meet our clients' expectations, delivering a job that everyone is happy with and can be proud of.

How about your hopes for the future?

To become one of the best foremen in the

industry and to continue helping everyone at Lucas. As finishing specialists we have very high standards; our clients can believe in us as one of the best decorating firms and we never let them down.

What do you do when you're not working?

I enjoy meeting friends, going out for a drink and watching movies and football. I like to swim, travel and spend time cooking in the kitchen.

What's your all-time favourite construction?

The Eiffel Tower – I like to look down from the highest point and feel like I'm at the top of the world.



Meet another member of our team on p.93

Leaders in Surface Preparation, Removal & Finishing

We provide the correct background surface, for the successful application and durability of the specified flooring system, or the polished final finish.



For the confidence that your expectations will be met now and in the future.

CONTACT THE EXPERTS.

Contracting Equipment Sales & Servicing Advice

The
Preparation
Group



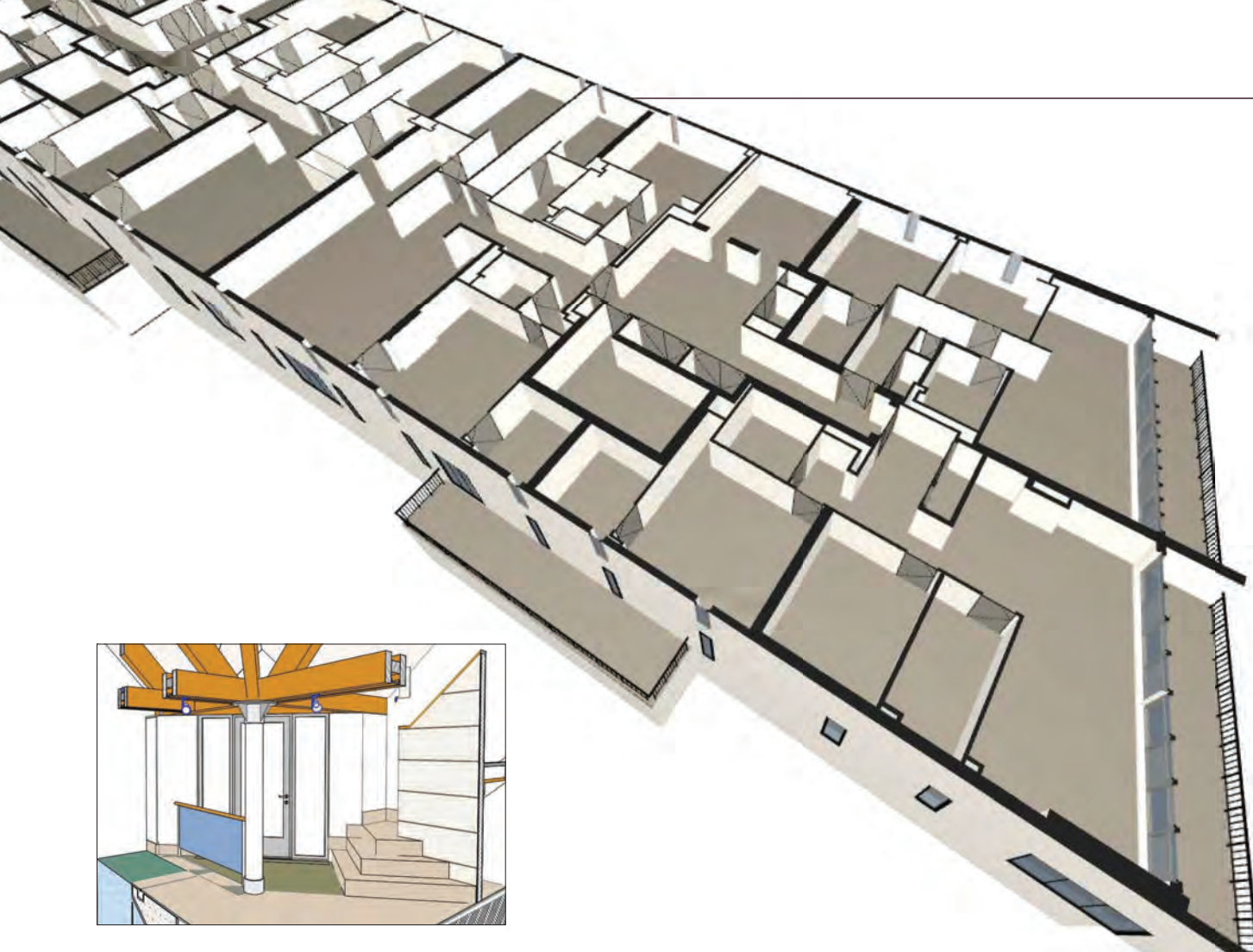
Key to a Professional Surface

Deacon Road Lincoln LN2 4JB

01522 561460

e: sales@ppcgroup.co.uk

www.thepreparationgroup.com



Intelligent 3D Modelling

More and more in the construction sector, the pursuit of new technology and innovation is essential to providing a quality finished product for our clients. To that end, we have joined forces with jhd Architects on the development of Lucas BIM, an exciting step forward for our industry

As trend setters and innovators, being forward thinking and embracing new technology forms an integral part of everything we do here at Lucas. Our goal as a company is to continually set new standards, which is why we have become early adopters of BIM in the fit out and finishing sector.

Standing for Building Information Modelling, BIM is the process of designing a building collaboratively using coherent and intelligent 3D computer modelling systems instead of separate sets of 2D drawings. Producing innovative design, BIM noticeably reduces costs, bringing projects to life in a virtual world for clients and

the workforce to see ahead of time.

With 'Lucas BIM' we have established our own capability building strategy that combines 3D modelling software with 'production line' ways of working, enabling us to meet the immediate and growing expectations of our current clients, while building long-term capability to maintain our position as one of the UK construction industry's leading specialist fit out and finishing contractors.

"We started designing all our projects in 3D BIM over four years ago because we could see how it would benefit clients and contractors – and the productivity of our business," says Tim Ball, Principal at jhd Architects. "As a forward

thinking practice, adopting BIM early was a natural thing to do."

Working to build our BIM knowledge and capability, we have been providing full technical support and implementing 'best practice BIM' from the outset. With Tim authoring and co-ordinating 3D project models, jhd Director, Susan Room, has worked alongside Lucas to articulate the Lucas BIM strategy, responding to contractors' questionnaires and coming up with creative ways to communicate our drive to be at the forefront of the BIM revolution.

"Lucas has been pursuing 'The Lucas Way', a collaborative 'production line' approach, for



"Lucas has been pursuing 'The Lucas Way', a collaborative 'production line' approach, for years"
- SUSAN ROOM, JHD DIRECTOR



“We started designing all our projects in 3D BIM over four years ago because we could see how it would benefit clients and contractors – and the productivity of our business”

- TIM BALL, PRINCIPAL AT JHD ARCHITECTS

years,” says Susan. “They really understand BIM. One of the major benefits will be winning more work, not least because their clients are increasingly asking for it!”

So far we have collaborated on a scheme with Sir Robert McAlpine to explore BIM collaboration with a team of specialist contractors, as well as a prestigious residential project in Central London for Mace and a fit out project for a very high quality new office building in West London.

“The chemistry between our two companies was obvious from the start, so we began working on one project and then another, and another,” says Tim. “Going forward, we hope that this partnership will see more projects, more

learning and more pushing the boundaries.”

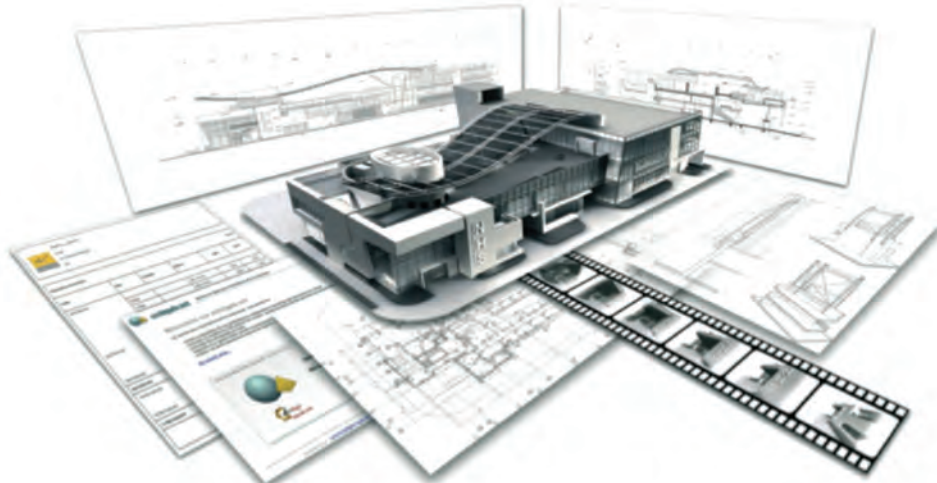
Our sentiments exactly. Indeed, our ambition is to continually set new standards by leading rather than following the BIM revolution.

Equipping us to respond to our clients’ immediate and growing expectations, our commitment to this technology also stimulates new innovation and opportunities for all those we work with. Meeting our clients’ and contractors’ exacting standards is central to everything we do, so by co-ordinating skills, sharing knowledge and learning from each other, Lucas BIM delivers maximum value for everyone and leads us confidently into an inspiring future.

BIM Benefits

We look at some of the key advantages of Building Information Modelling

- Better communication, using powerful 3D visuals to improve the client’s understanding of what they will get and the contractor’s understanding of what needs to be built
- Fewer change orders and less rework, which are major causes of cost/schedule overruns and loss of repeat business
- More off-site manufacture that speeds up project delivery and reduces project costs and waste
- Virtual rehearsals of the construction process, optimising procurement and delivery of materials and components
- Virtual risk assessments by the Health and Safety team that significantly improve site safety







PROTECTING HOMES & BUSINESSES ACROSS THE SOUTH EAST FOR THE LAST 20 YEARS



**Burglar Alarms, CCTV, Access Control Systems,
Door Entry/Intercom & Full Service Electronic Security**

0800 281249

www.brooksecurity.com

 twitter.com/brook_security
 facebook.com/brooksecure



Meet the Team



Marian Lipka
Site Supervisor

Tell us about your background

I've been working in construction for 11 years. I started as a dry lining fixer and then moved to a supervisor role. I work mainly on commercial construction across London.

How about your duties at Lucas?

I am currently working on the British Sky Broadcasting Group's (BSkyB) meeting centre, where I assist a project manager to ensure all work runs smoothly. I am in charge of a team of eight, making sure they arrive on time and work to the highest possible quality and safety standards. I check the quality of work that is being done and certify that everything is up to specification.

And when you're not working?

I like to go online to keep updated about general technical matters, politics and aviation. At the same time I try to live a healthy lifestyle and keep fit by working out and going running on a regular basis. My real passion is aviation, which takes up a lot of my time.

How would you sum up your favourite thing about working at Lucas?

The fact that I get to work with professionals who are always ready to discuss work-related matters in an effective way in order to come up with good solutions.

What's your favourite London landmark?

There are many wonderful places in London. Richmond Park is one of them; it's a very big, open space where I can relax or go running, take some pictures of nature, colourful flowers and some animals. I also like a more modern part of East London, which is Canary Wharf. The mixture of modern buildings and canals makes the area look astonishing. It's a good place for a walk and dining with friends.



FINISHING TOUCHES

What Lucas Group clients have been saying about our work



THE SAVOY HOTEL

●● Lucas Fit Out provided exceptional skill and knowledge in the resolution of the function areas of The Savoy Hotel ●●
NICK MOORE, DIRECTOR, MACE LTD



MCLAREN PRODUCTION CENTRE

●● The excellence of S. Lucas Group's work amply demonstrated that we shared a passion for quality and detail. We were delighted by their ability to match or exceed all of our expectations within a very tight timeframe. It became abundantly clear that we would continue to work together ●●
RON DENNIS, EXECUTIVE CHAIRMAN, MCLAREN GROUP



BUTLERS WHARF, LONDON

●● I have been very pleased with the way the contract has been carried out and I hope we can work on new projects in the future ●●
PAUL METCALFE, ASSOCIATE, KNIGHT FRANK



→
THE SHARD

●● Lucas were a pleasure to deal with, they responded well to everything we threw at them and they were very much part of the success of The Shard ●●

TONY PALGRAVE, PROJECT DIRECTOR, MACE LTD



ALEXANDRA THOMPSON / SHUTTERSTOCK.COM

←
GRAND HALL, OLYMPIA

●● Paul [*Jearum, Painting Director*] ran a very professional and high quality project and was at all times very helpful and willing to assist in any onsite matters that needed resolving ●●

**ROBERT MARKS, HEAD OF PROJECTS,
EARLS COURT & OLYMPIA LTD**



→
PETER JONES, SLOANE SQUARE

●● I thought it necessary to say 'thank you' to you and your team for all the hard work and effort that has been achieved to date. I am sure we will very shortly be working together again in ventures new as my portfolio has grown ●●

TERRY SPRAGGETT, BOVIS LEND LEASE



←
TERMINAL 5, HEATHROW

●● S. Lucas has been an integral part of the success of the construction of T5. The company is agile enough to respond to the changing needs of the project and shows a positive 'can do' approach from the Directors to the operatives onsite. Most definitely S. Lucas is a preferred supplier to Mace Ltd ●●

DAVE HARDY, OPERATIONS DIRECTOR, MACE LTD



SPECIALISING IN RESIN FLOORING, HYGIENIC WALL CLADDING AND STRUCTURAL CONCRETE REPAIRS

Resin Floors - Coatings - Stone Cleaning - Restoration - Concrete Repairs - Waterproofing - Industrial Painting



Northamptonshire, Bedfordshire, Buckinghamshire, Oxfordshire and all of the UK

Committed to providing flooring solutions at a convenient time, on time, safely and efficiently

Our operatives are frequently trained by our suppliers and have the following safety and competence training

CITB Safety Awareness | CSCS Safety Training | NVQ Qualifications | CHAS | ACTA (Airport working)



For a **FREE** survey, contact us on...

Tel: 01933 663929

Email: appliedresins@aol.co.uk

www.appliedresinsuk.com

Long Lodge Farm, Main Road, Grendon, Northants NN7 1JW

Spray Equipment Specialists

Trade Spray Services offer a wealth of knowledge in the supply, hire or repair of paint spray equipment. With equipment to suit most needs ranging from small HVLP setups to large industrial pneumatic airless systems we are confident we have the solution for your paint or coating requirements. In house or on site training also available.

Proud supplier of Paint Spray Equipment to Lucas

Equipment Types Include

- Petrol Airless
- Electric Airless
- Pneumatic Airless
- Air Assisted Airless
- Conventional Air Spray
- HVLP

Typical Applications Include

- Decorative Paints
- Fine Finish Applications
- Fire Protection Products
- Protective Coatings
- Anti Graffiti Coatings
- Roof Coatings



Trade Spray Services Ltd

Unit 7 Oasthouse Way Orpington Kent BR5 3PT

Tel: 01689 829001 Fax: 01689 873464 www.tradespray.co.uk



LOOKING FORWARD



As our first yearbook, we hope that this publication makes clients feel closer to us and helps them better understand the inner workings of Lucas – our people, our suppliers and what makes us tick. We're hoping in the future to continue strengthening the company, taking the lead and doing things to a very high standard. We've got to a point now as a business where we can simplify the process for our clients so that they get a complete service from us and an end-to-end product. Our drive is to create a Lucas system that enables clients to have anything they want from the company, providing them with a seamless service, great result and on time delivery in any area.

Flexibility in construction is key and we are trying to make this as simple as possible for our clients. This way, they can pick and choose from a variety of services we offer, thereby turning Lucas from a contractor into a brand. We are driving towards the development of this system, which will be a further enhancement of everything we do as a business, including quality control, manufacturing processes and eco-friendly ways of working.

We want to inspire people to come into our industry. By the end of this decade, half the working population within the UK construction sector will be over the age of 50. What that's telling us is that young people aren't coming aboard, so we're looking to change that by setting up training programmes with colleges for our forthcoming Pro Tools range. This is a trade and a career for youngsters to get into, so we're keen to attract

them by helping them look at it differently, not just in the coming year, but in the long term as well. By doing this, we can get the next generation trained up to the very best standards.

Lucas Pro Tools will be the basis for continually developing better ways of doing things across the whole spectrum. We've invested heavily in design as a company, which is an area that we are keen to develop further. There are already designers working inside the business who are creating the vision for tools that we're going to be using and that will also be available to a wider audience.

This magazine is a recognition of our friends and family – our staff, suppliers and clients. It's a big 'thank you' that we want to share with everybody who is involved and we're hoping that it will reinforce those relationships. We look forward to doing this annually and giving everybody that works with us the chance to look back and share on what we've achieved, where we've come from and what we're doing to move ahead.

All the best,

Danny Lucas
EXECUTIVE CHAIRMAN AND MANAGING DIRECTOR

CONTACT US

All the names and numbers you'll need to get in touch with the Lucas team

Lucas Fit Out & Finishing Specialists
 11 Invicta Business Park
 London Road
 Wrotham
 Kent
 TN15 7RJ

Tel: 01732 884 022
 Fax: 01732 884 033
 Email: lucas@lucasuk.com
 Web: www.lucasuk.com

 @SLucasGroup  LucasUK



↳ Danny Lucas
Executive Chairman & Managing Director
dlucas@lucasuk.com



↳ Katie Lucas
Head of Project Support & Training
klucas@lucasuk.com



↳ Ken Mulholland
Commercial Director
kmulholland@lucasuk.com



↳ Paul Baker
Logistics Manager
pbaker@lucasuk.com



↳ Frank Gallagher
Construction Director
fgallagher@lucasuk.com



↳ Adam Lucas
R&D Manager
alucas@lucasuk.com



↳ Max Clark
Operations Director
mclark@lucasuk.com



↳ Tom Taylor
Senior Commercial Manager
ttaylor@lucasuk.com



↳ Paul Jearum
Painting Director
pjearum@lucasuk.com



↳ John Evans
Senior Commercial Manager
jevans@lucasuk.com



↳ Rod McInerney
SQE Manager
rmcinnerney@lucasuk.com



↳ Yan George
Contracts Manager
ygeorge@lucasuk.com



↳ Cathy Ferguson
Head of Accounts & HR
cferguson@lucasuk.com



↳ Celine Terry
Marketing Manager
cterry@lucasuk.com

EDITOR **Richard Moore**
rmoores@onemediauk.co.uk

COMMERCIAL MANAGER **Clara Higgs-Prosser**
chprosser@onemediauk.co.uk

DEPUTY EDITOR **Frederick Latty**
flatty@onemediauk.co.uk

PRODUCTION CO-ORDINATOR **Phil Glover**
pglover@onemediauk.co.uk

HEAD OF DESIGN **Rowena Cremer-Price**
rcremer-price@onemediauk.co.uk

COMMERCIAL & DIGITAL
 MARKETING MANAGER **Laura Plane**
lplane@onemediauk.co.uk

DESIGNER **Penny Ireson**
pireson@onemediauk.co.uk

PUBLISHING DIRECTOR **Nick Moore**
nmoore@onemediauk.co.uk

JUNIOR DESIGNER **Xela Ruy**
xruy@onemediauk.co.uk

One Media & Creative UK Ltd
 Kenwood House
 1 Upper Grosvenor Road
 Tunbridge Wells
 Kent
 TN1 2EL
 01892 779 650
www.one-media.co



Finish magazine is owned by Lucas Fit Out & Finishing Specialists and published/distributed by One Media & Creative UK Ltd. All rights reserved. The views expressed in this publication are not necessarily those of the owner or publisher. All prices are correct at the time of going to print. Neither the publisher nor the owner can accept responsibility for any errors or omissions relating to advertising or editorial. The publisher reserves the right to change or amend any competitions or prizes offered. No part of this publication may be reproduced without prior written consent from the publisher. No responsibility is taken for unsolicited materials or the return of these materials whilst in transit.



GIVE YOUR BRAND THE WOW FACTOR

CALL:
01622 623790

EMAIL:
HELLO@
WEARETANGERINE.
CO.UK

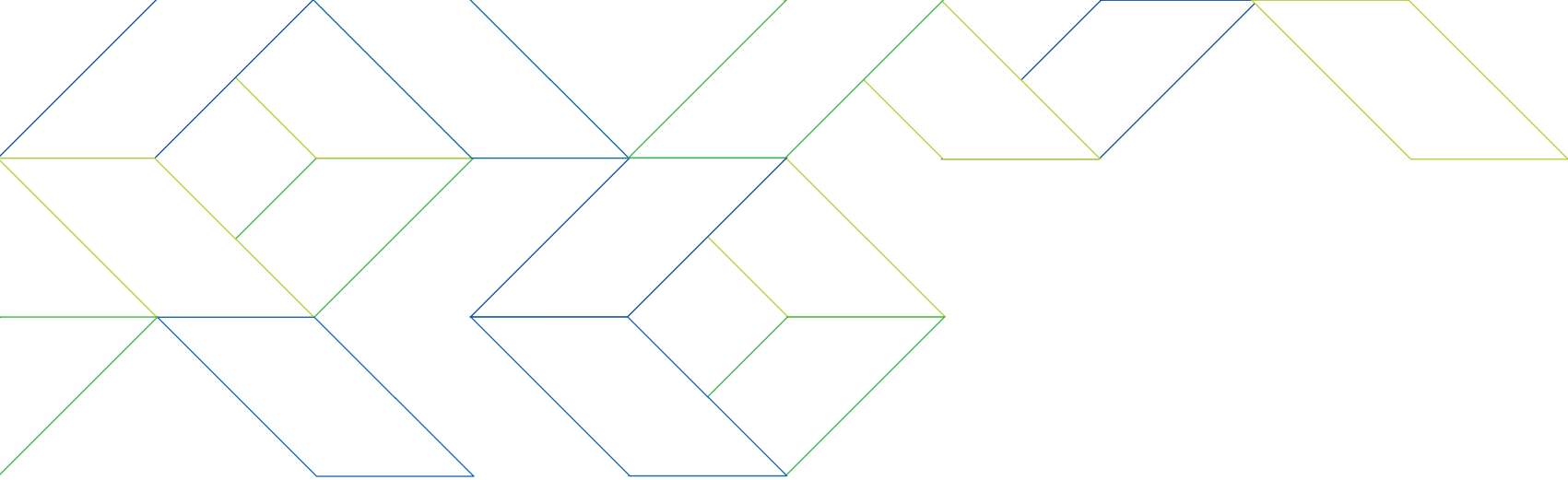
we are
tangerine.
co.uk

WE ARE TANGERINE IS A CREATIVE
DESIGN & DIGITAL AGENCY OFFERING
EXCEPTIONAL DESIGN & DIGITAL
SERVICES TO OUR CLIENTS.

WE ARE PASSIONATE ABOUT WHAT
WE DO AND HAVE A PROVEN TRACK
RECORD OF CREATING ENGAGING
MULTI-DISCIPLINARY VISUAL
COMMUNICATIONS WITH OUTSTANDING
RESULTS, NO MATTER THE SIZE
OR BUDGET.

PLEASE CONTACT US, WE'D LOVE
TO HEAR FROM YOU.

we are
tangerine



THE **LUCAS** LEGACY

For almost over half a century, we have been delivering an efficient and reliable service for our clients, picking up an assortment of accolades while expanding and developing our technology along the way. We introduce you to the world of Lucas and give you a rundown of our history to date

A lot can happen in 45 years. For the team at Lucas, we have seen our company go from strength to strength, establishing ourselves as a quality fit out and finishing specialist to the construction industry.

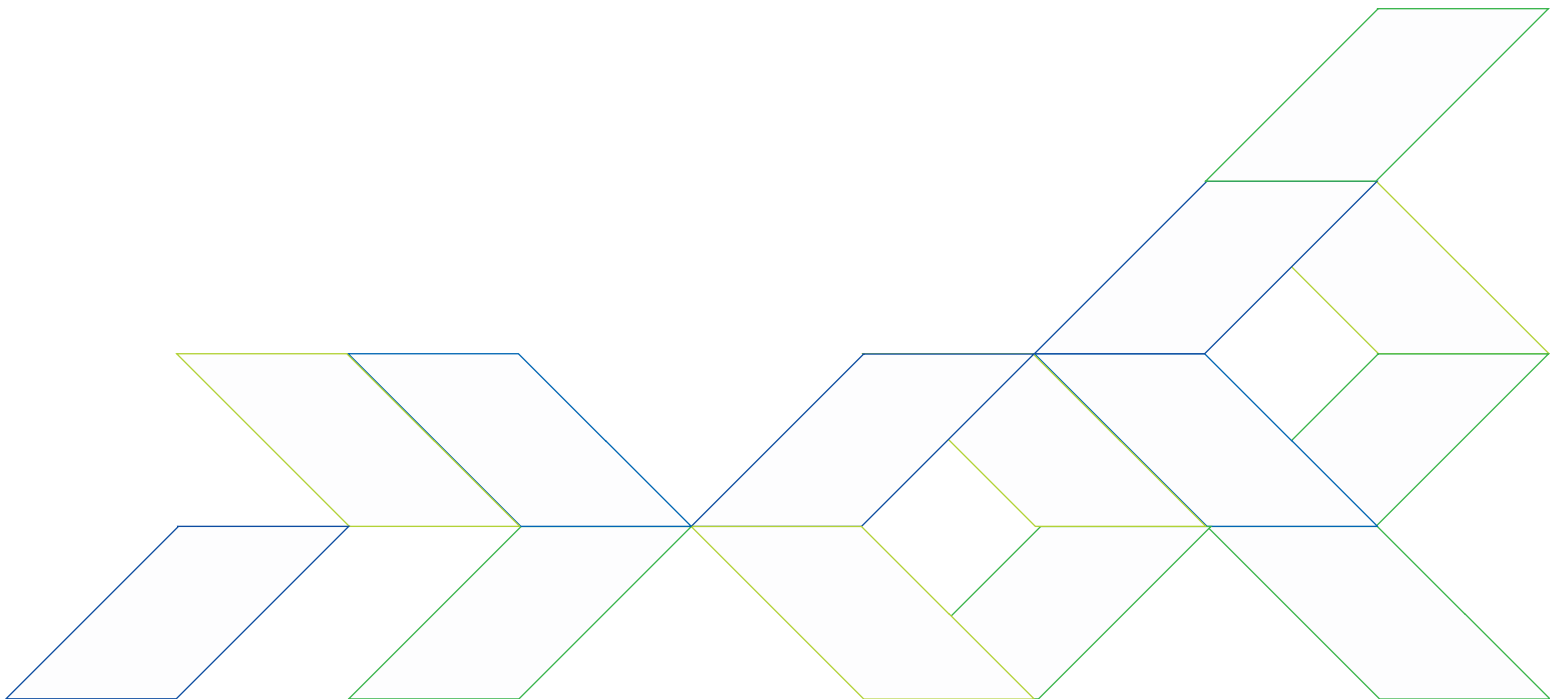
The seeds of our business were sown in 1968 when Sam Lucas purchased his first spray compressor for just £50. Since this humble beginning, we have grown in size and developed in technology, cementing our reputation as a hands-on, proactive and flexible company with a dedication to quality and reliability for our clients.

Our team draws on this ethos with each and every project we work on, regardless of whether it costs £50,000 or £10million – an ongoing commitment to our values can be seen across the board. We've won a number of prestigious industry awards and our portfolio of testimonials from satisfied clients (see p.94) likewise speaks for itself.

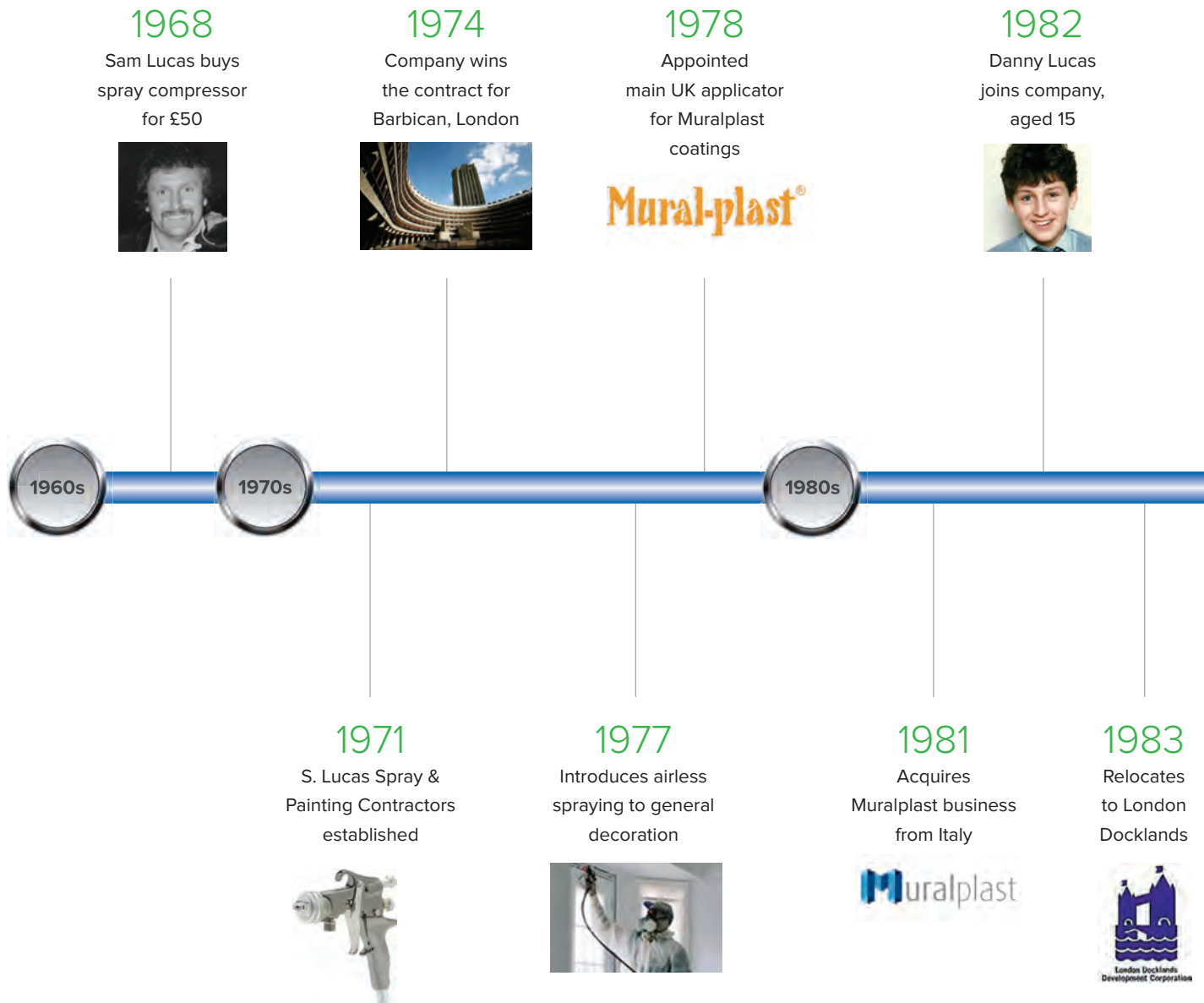
In recent years we have taken on some significant and rewarding projects, including the Savoy Hotel, the London 2012 Olympic Stadium and the Shard, London Bridge. Working with a diverse range of clients from a variety of sectors, we have built a reputation for meeting their requirements on time, on budget and to the highest possible standards.

Any yet, for all our success so far, we feel that the best is yet to come and, while only time will tell what lies ahead, one thing's for sure – the sky's the limit and we're just getting started.

[Open for a timeline of our company history...](#)



WELCOME TO OUR WORLD



1985

Work ends on Terminal 2, Heathrow



1988

Completes work on the new London City Airport



1991

Danny Lucas becomes Director



1994

Achieves BS 5750 (ISO 9001) accreditation



Launches www.lucasuk.com



1996

First project for Mace complete



1990s

1986

Selected to work on major data centre in South Yorkshire for Midland Bank



1989

Finishes work at Canary Wharf



1992

Concludes work on the MI5 HQ, London



1995

Introduces water-based paints on all projects



1998

Finishes Bluewater Shopping Centre



2006

Chosen to carry out T5, Heathrow



2008

Completes three London high rise office towers



Establishes clear identity for S. Lucas Group

S.LUCAS GROUP
THE UK'S NO.1 FIT OUT AND FINISHING SPECIALISTS

2000

1997

Work for Smithkline Beecham, Harlow concluded

SB
SmithKline Beecham

1999

Wins Millennium Dome contract



Completes Jubilee Line Extension and North Greenwich Underground Station



2007

Opens Logistics and Consolidation Centre



Lucas Fit Out established

LUCAS
FIT OUT

2009

Royal Shakespeare Theatre, Stratford-upon-Avon finished



2010

Danny Lucas appointed Chairman



Completes Savoy Hotel, London, for owners Fairmont Hotels



Achieves ISO 14001 accreditation



Wins industry awards for work at Olympia



2012

Wins Construction News' Specialists Award for the second time



Completes works on The Shard and first urban cable car for Emirates Airline across the River Thames



Wins major projects including ArcelorMittal Orbit, Velodrome, Aquatics Centre



2011

Ron Dennis, Chairman of the McLaren Group, appoints Lucas Group as official McLaren Technology Partner



Completes works to the 2012 Olympic Stadium and Westfield Stratford City



S. Lucas Technology Centre opens



2013

Shortlisted for two industry awards (Specialist Awards and Construction News Awards)



New brand launched (developed by Apple brand designer, Rob Janoff)



Scoops London's most luxurious residential projects at One Tower Bridge



Pioneers Pro Tools range





HARD WEARING PAINTS FOR HARD WORKING BUILDINGS



200 years of expertise and passion go into everything we do at Crown Paints, delivering high performing products and a range of personalised services that meet the needs of your business and budgets.

Our sustainable redecoration programmes offer proven extended maintenance intervals both inside and out with a range of coatings that include:
CROWN TRADE CLEAN EXTREME - Scrubbable emulsions ideal for high traffic areas.

CROWN TRADE TIMONOX - Flame retardant coatings systems with a class 0 fire rating that buy precious time in the event of a fire.



Choose the right paint for your job using our new, free online Crown PaintSpec Finder® tool, the easy way to identify your paint requirements. www.crownpaintspec.co.uk

For more information on our SMART Maintenance solutions, call us on **0845 034 1464** or email us at info@crownpaintspec.co.uk



The Crown Paints Family
Add your professional touch with products from The Crown Paints Family

It's not just paint.
It's personal.